

# NewXS Fixturing system

Catalogue 2014<sup>E05</sup>



Modular fixturing system  
for optical measuring and  
checking instruments





## Hightech in Aluminium

Witte was founded in 1969 and initially manufactured complex, high-precision parts for the aerospace industry. Today Witte has developed into a leading manufacturer of fixturing systems and gauges for all kinds of applications.

Almost all leading companies from automotive and aircraft industries now rely on Witte technology in order to maintain high quality in their production process.

Among a broad range our emphasis lies on development and manufac-

ture of advanced workpiece clamping systems for universal application. Witte has taken up the lead in the branches of „flexible fixturing“ and „vacuum technology“ as a result of many patented solutions.

The high quality of all Witte products and internal processes is verified according to various certificates on European level.

Qualified staff and a modern machine shop are further guarantees for quality.





**NewXS Clamping System** .....2  
 ■ Introduction

**NewXS 16 Basic components** .....8  
 ■ Frames, Bars, Lugs

**NewXS 16 Stop and alignment components** ....13  
 ■ Centers, Stops

**Clamping components** .....16  
 ■ Clamps, Top sections, Connectors

**NewXS 16** .....26  
 ■ Basic Set

**Alufix 16 Classic components** .....28  
 ■ Compatible with NewXS 16

**Alufix 16 Classic connection elements** .....38  
 ■ Compatible with NewXS 16

**NewXS MiniVac** .....42  
 ■ Mini vacuum clamping system

**NewXS 10** .....44

**Index** .....45

**Certification**

Witte Geraetebau Barskamp is certified acc. to

- DIN EN ISO 9001 • DIN EN ISO 9100
- QSF-A (Aircraft supplier)



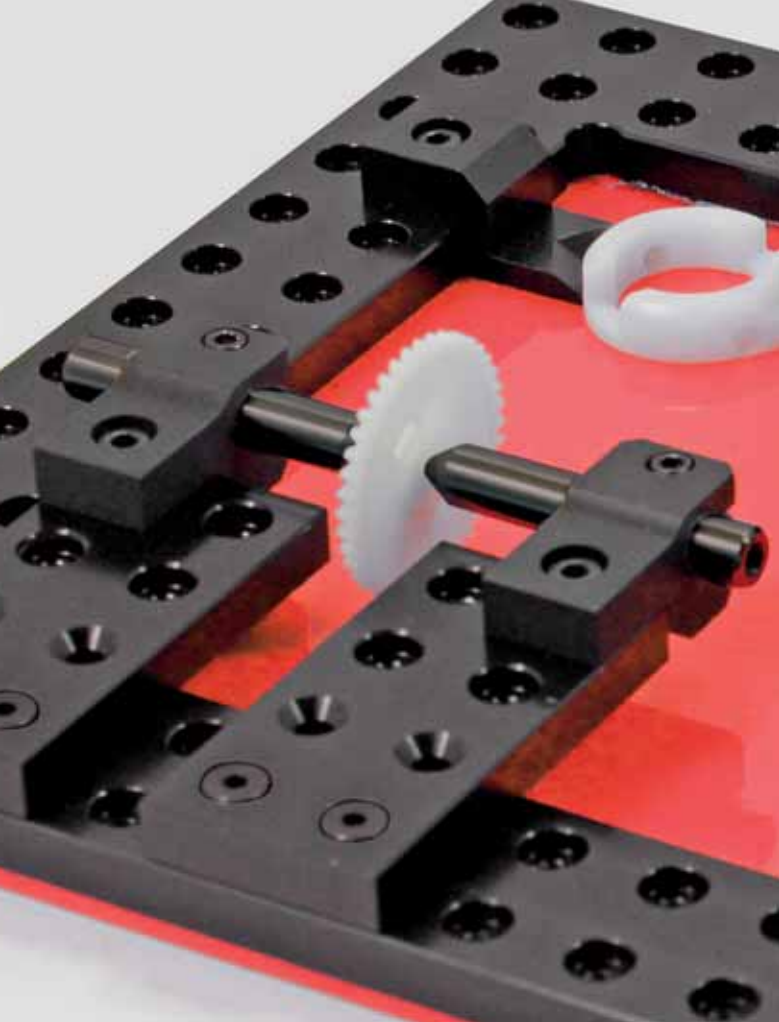
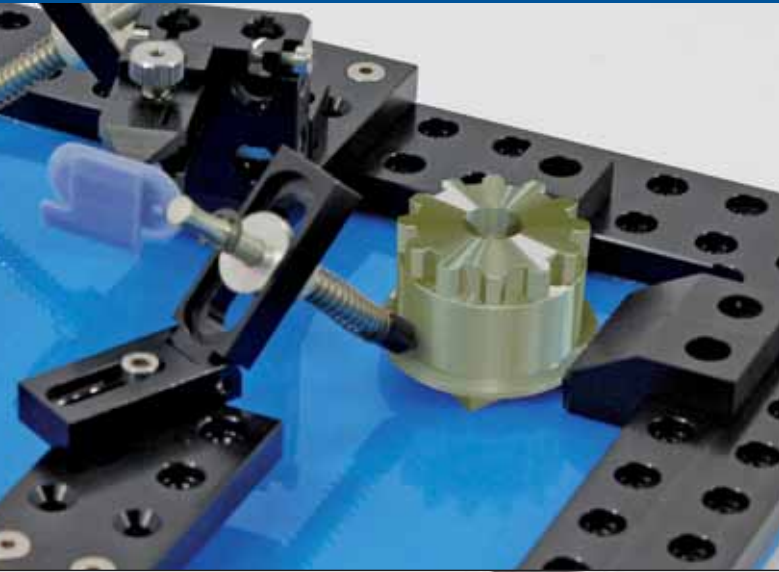
**Information:**

Weights mentioned in the catalogue are non-committal and approximate, and can deviate considerably i.e. through technical changes.

- We reserve the right to make technical changes.
- Where differences between photos and parts lists exist, the parts lists are decisive.
- Due to fluctuations of copper content in aluminum - alloy colour deviations may occur during anodizing.

All details on our products in this catalogue, especially illustrations, drawings, dimensions and statements on performance are to be regarded as approximate average values. We reserve the right to change design, technical data, dimensions and weights.

The indicated standards, similar technical regulations as well as technical details, descriptions and illustrations are valid at time of printing. Our general trading conditions are valid. Our quotations are decisive.



# NewXS

## Modular fixturing system for optical measuring and checking instruments

NewXS is the consequential continuation of the Witte modular philosophy established worldwide. All elements follow the well-known ALUFIX modular system principle and are compatible.

### Suitable for profile projectors and digital image processing:

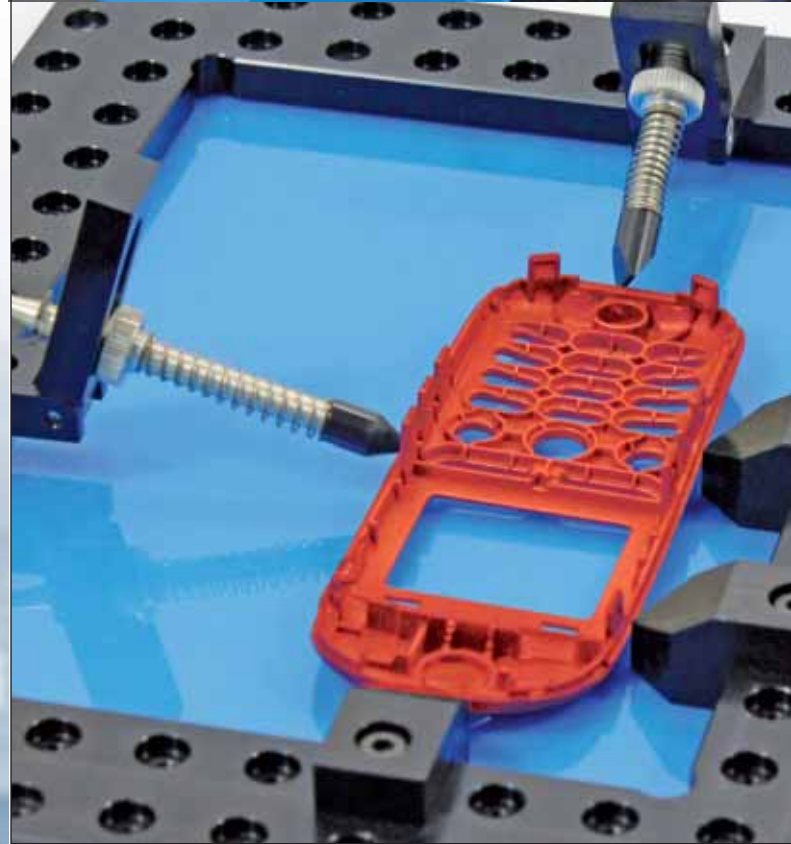
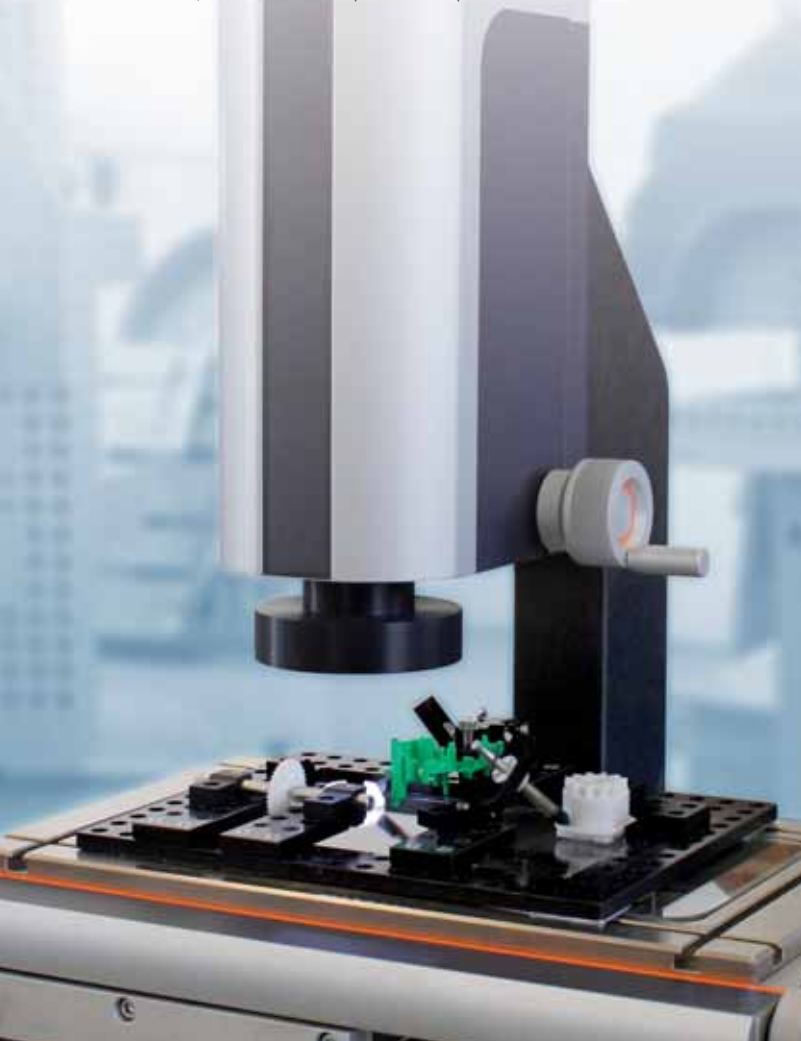
Two system sizes:

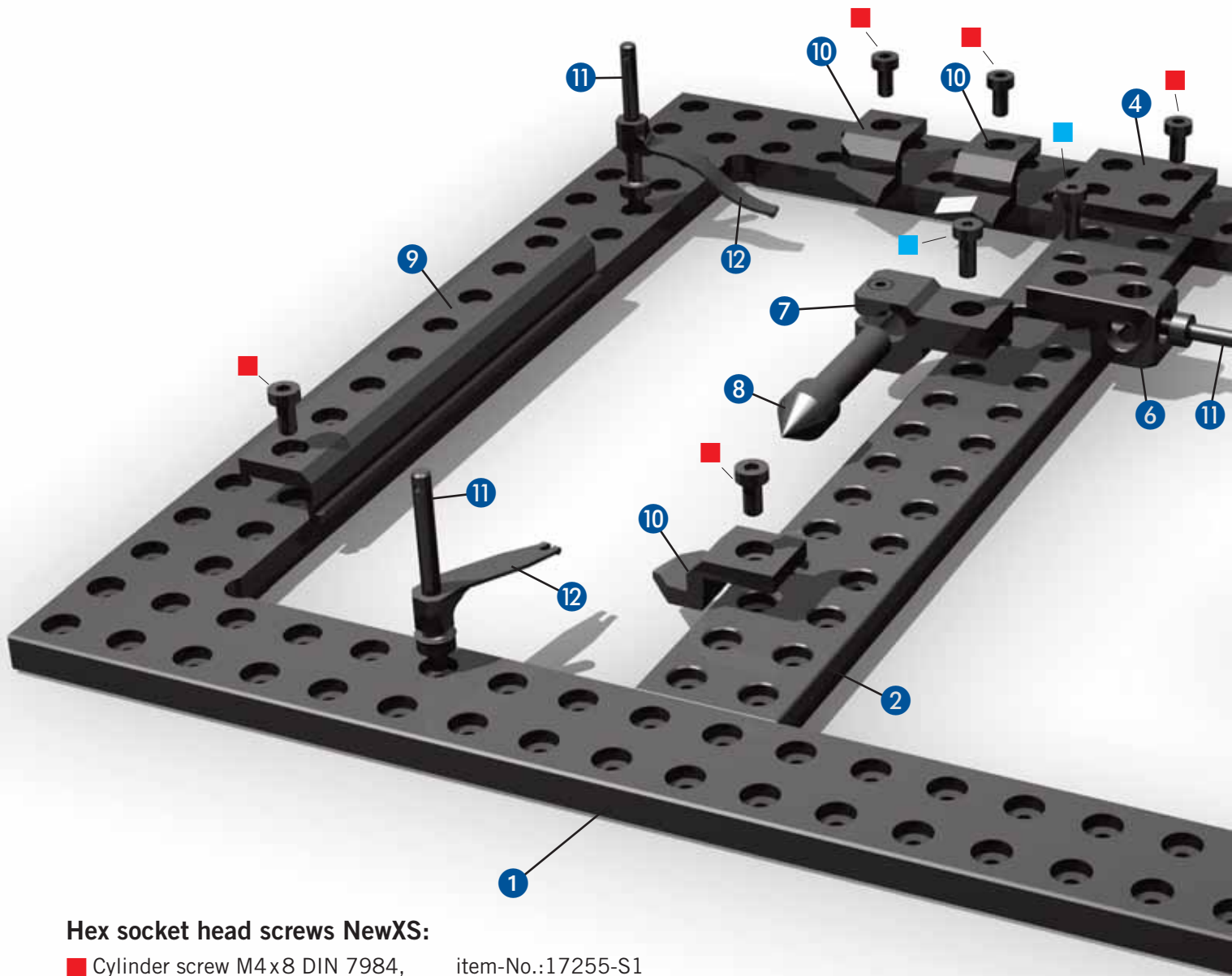
XS 16 and XS 10 for small parts

According to modular principle both upgradeable with a variety of Alufix 16 and including a new mini vacuum solution.

Material: High-tensile aluminium alloy, anodized (black or natural)

Fast, accurate set up and adaptable to new tasks.

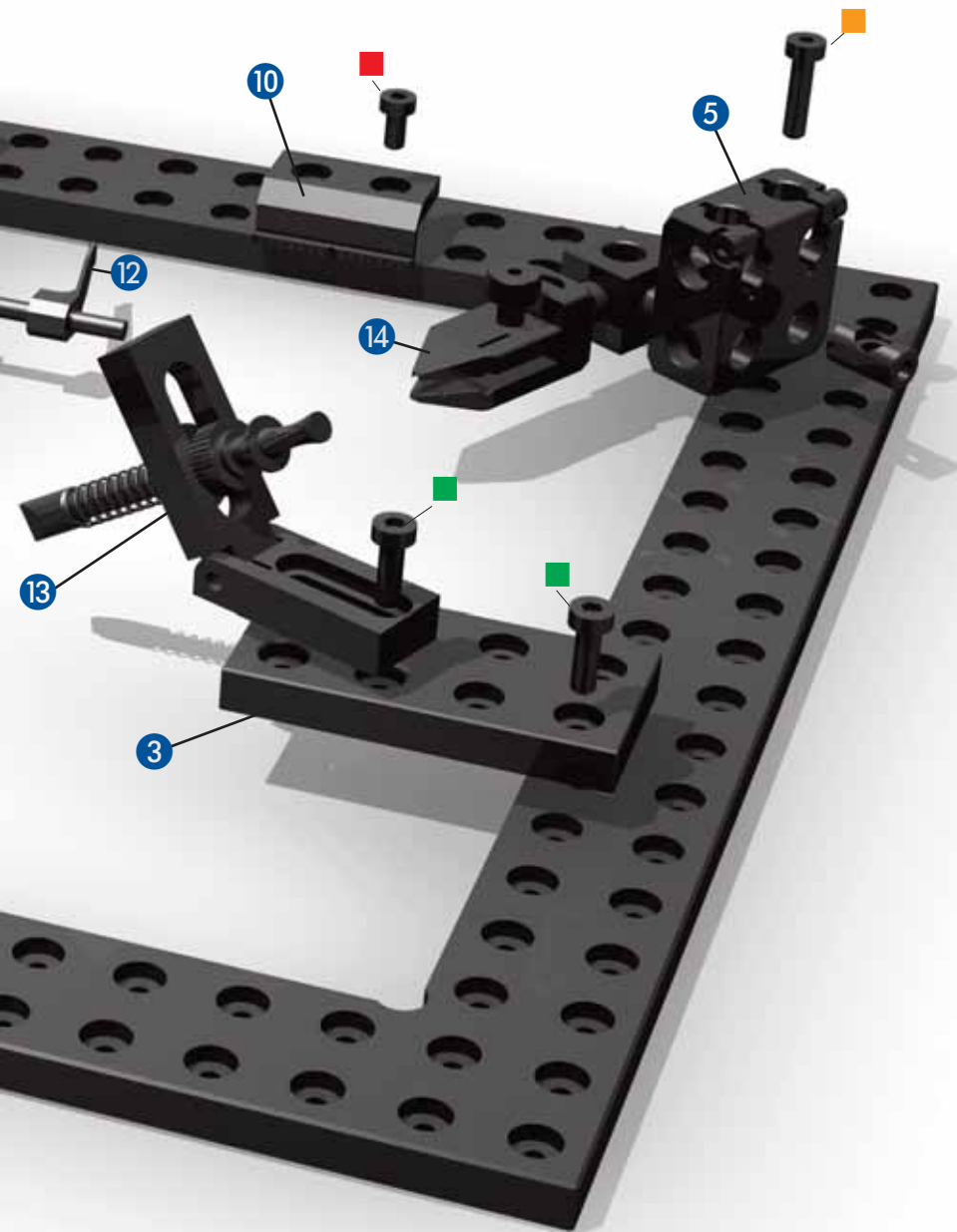




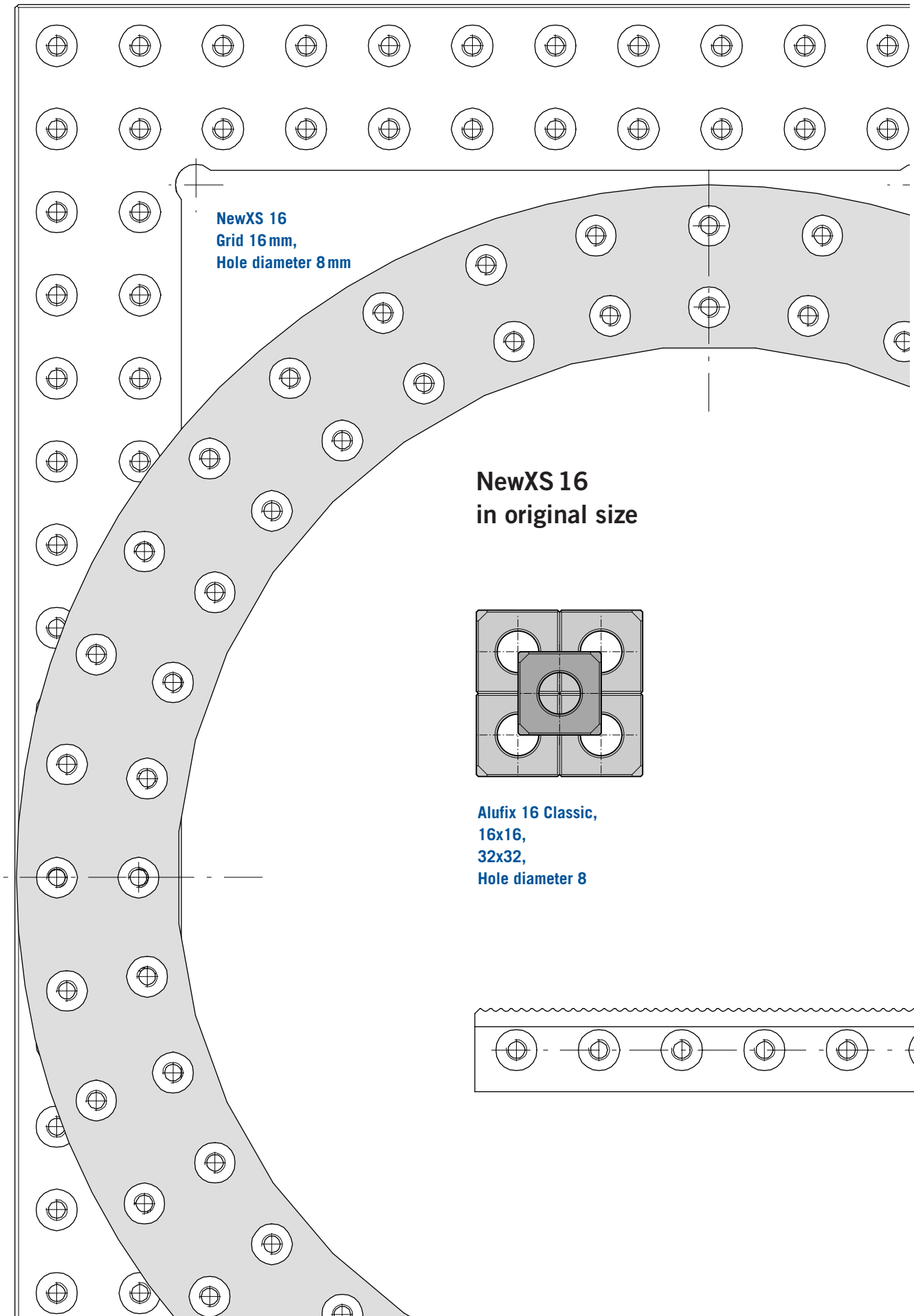
### Hex socket head screws NewXS:

- |  |                   |
|--|-------------------|
| <span style="color: red;">■</span> Cylinder screw M4x8 DIN 7984,     | item-No.:17255-S1 |
| <span style="color: blue;">■</span> Cylinder screw M4x10 DIN 7984,   | item-No.:11546-S1 |
| <span style="color: green;">■</span> Cylinder screw M4x12 DIN 7984,  | item-No.:16141-S1 |
| <span style="color: orange;">■</span> Cylinder screw M4x16 DIN 7984, | item-No.:16359-S1 |

# Components NewXS Spannsystem



- ① Grid frame
- ② Bars
- ③ Adapter plate
- ④ Connecting lug
- ⑤ Clampholder
- ⑥ Basic bar
- ⑦ Tailstock
- ⑧ Center
- ⑨ Stop bar
- ⑩ Stop
- ⑪ Hold-down column
- ⑫ Hold-down spring
- ⑬ Push rod
- ⑭ Parallel clamp





# Components

## NewXS Fixturing system

NewXS is not only suitable for two dimensional reflected or transmitted light projectors but also for tactile measuring machines and three-dimensional measuring.

2D: Parts normally lie on glass plate of measuring unit, are positioned on the inside of a NewXS frame and clamped against frame or against glass.

3D: The frame serves as a basis for mounting complex contact and support surfaces so that parts can be measured from all sides.



### Basic components of NewXS:

Closed or open grid frames in one piece, round, square or rectangular. User defined L-shaped, U-shaped or closed grid frames made of bars.

Special frames adapted to machine surface.

Grid bars for dividing frames into several measuring areas for clamping more than one part at a time, or for positioning adjusting or clamping elements. Adapter plates, stud bars, clamp holders, telescopic columns.

### Contact and support components:

Serrated bars, V-pieces, fixed and rotating centers, ball points and tips.



### Clamping components:

Hold-down springs, clamps, parallel clamps, horizontal toggle clamps, vacuum suckers, magnetic supports

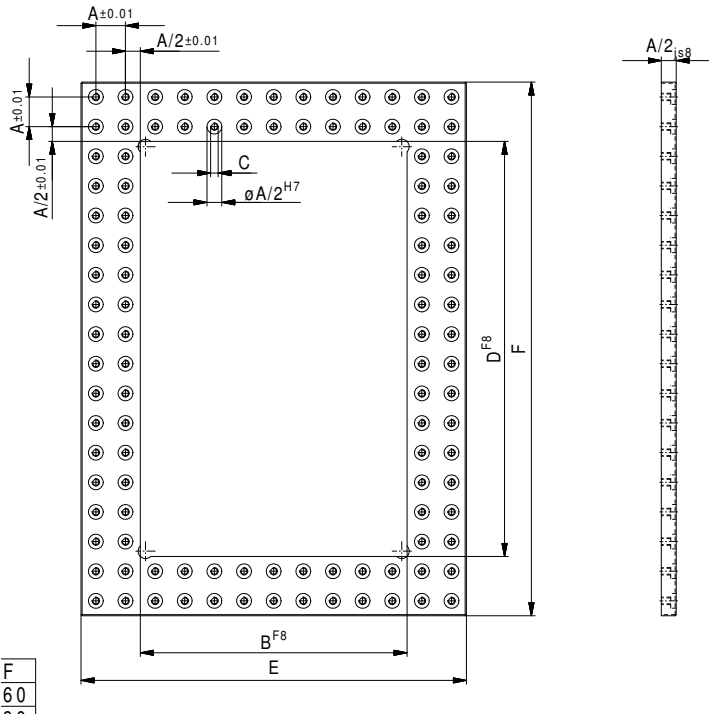


### Alufix 16 supplements:

All Alufix 16 Classic components can be combined with NewXS 16 elements.



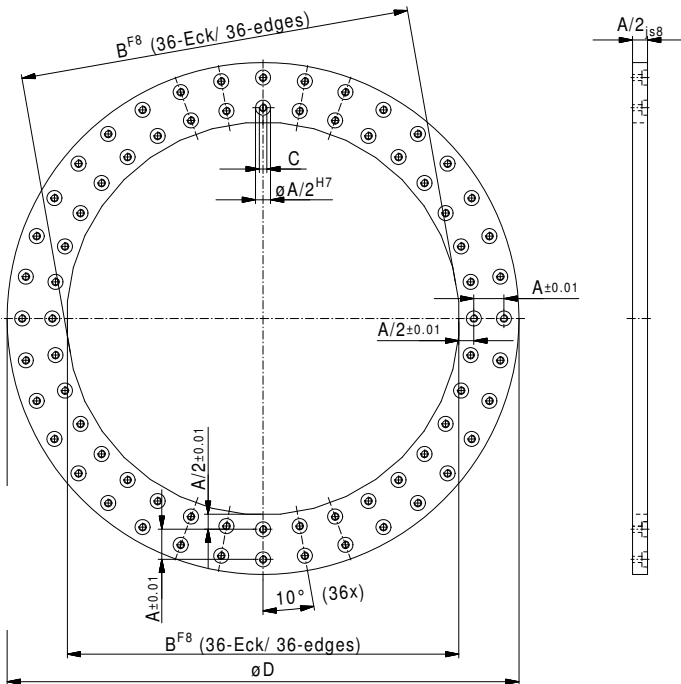
## Grid frame NewXS 16



Nr.	A	B	C	D	E	F	
326736-1	16	128	M4	192	192	256	481
324202-1	16	144	M4	208	208	272	521
326737-1	16	224	M4	272	288	336	702
326738-1	16	240	M4	288	304	352	742



## Grid ring NewXS 16



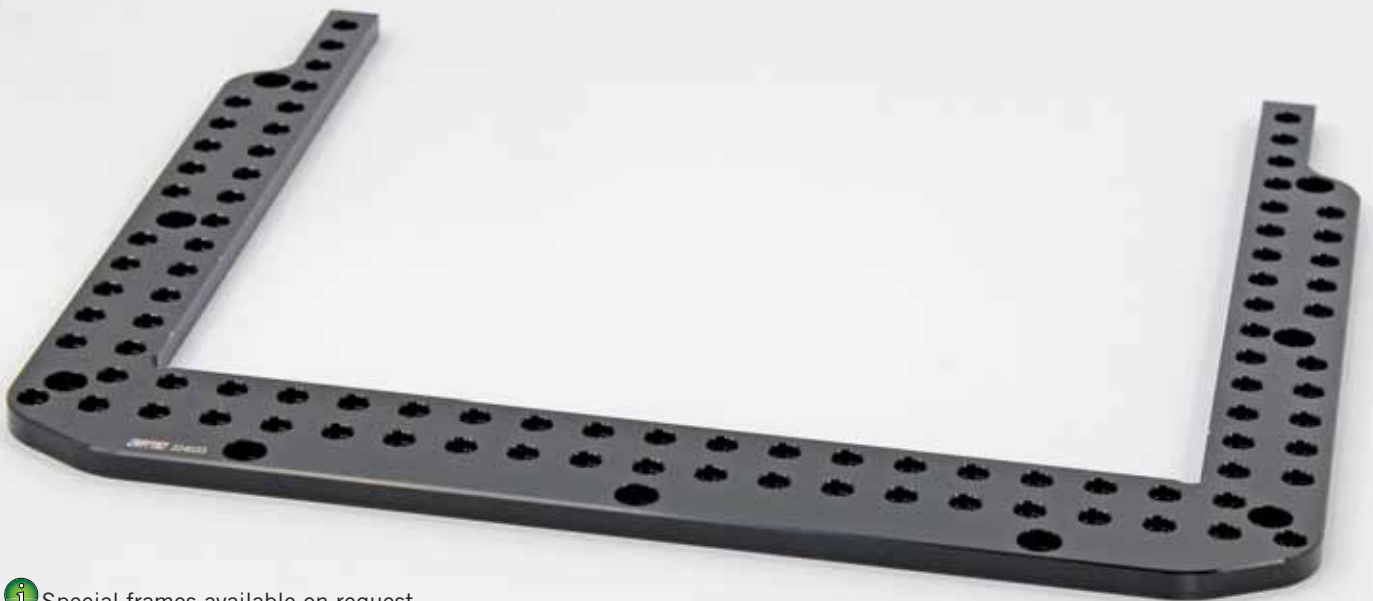
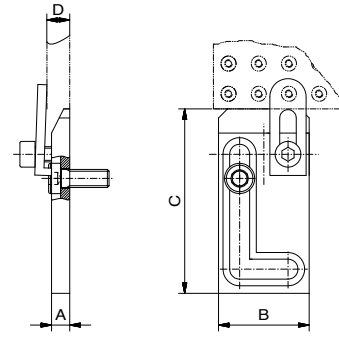
Nr.	A	B	C	D	
326734-1	16	208	M 4	272	484



## Stop with clamp NewXS 16

For grid plates XS

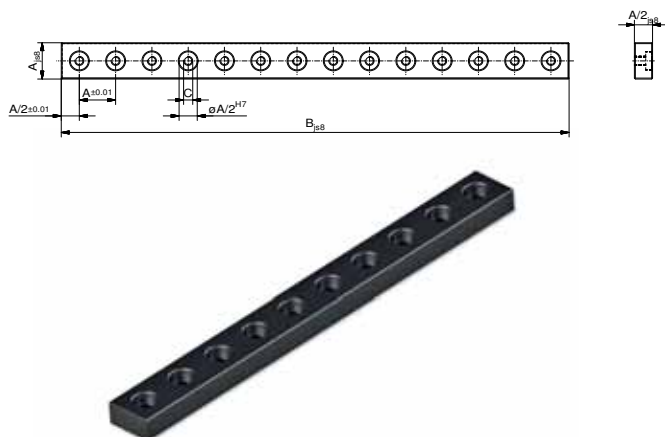
Nr.	A	B	C	D	g
95470-1	6	30	61	8	43
281447-1	6	30	175	108	



Special frames available on request



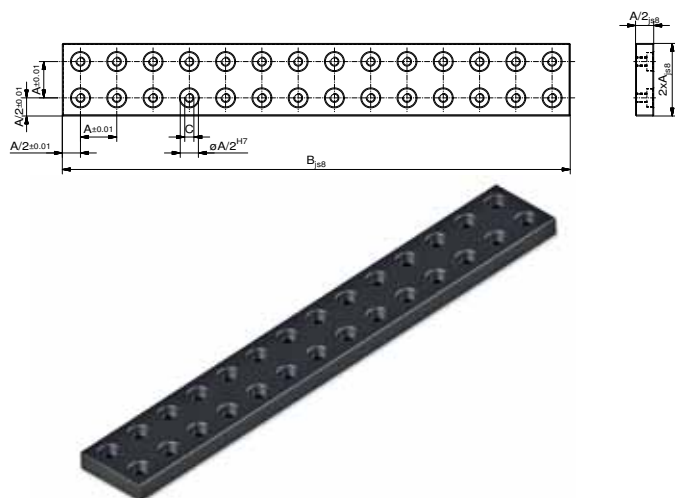
**NewXS** components can be anodized in different colours. Black (with suffix -1) is standard. Anodized natural is also available. Other colours on request.



## Bar NewXS 16

One row

Nr.	A	B	C	g
327749-1	16	48	M4	15
327750-1	16	64	M4	20
327726-1	16	80	M4	25
327727-1	16	96	M4	30
327728-1	16	112	M4	35
327729-1	16	128	M4	40
327730-1	16	144	M4	45
326725-1	16	160	M4	50
327741-1	16	176	M4	55
326726-1	16	192	M4	60
326727-1	16	208	M4	65
326728-1	16	224	M4	70
326729-1	16	240	M4	75
327785-1	16	256	M4	80



## Bar NewXS 16

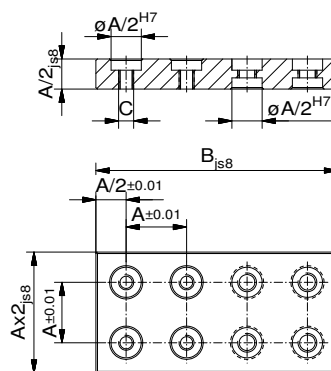
Two row

Nr.	A	B	C	g
327751-1	16	48	M4	42
327752-1	16	64	M4	56
327722-1	16	80	M4	70
327723-1	16	96	M4	84
327724-1	16	112	M4	98
326858-1	16	128	M4	112
327725-1	16	144	M4	126
326719-1	16	160	M4	140
327718-1	16	176	M4	154
326720-1	16	192	M4	168
326721-1	16	208	M4	182
326722-1	16	224	M4	196
326723-1	16	240	M4	210
326724-1	16	256	M4	224

## Adapter plate NewXS 16

Two row

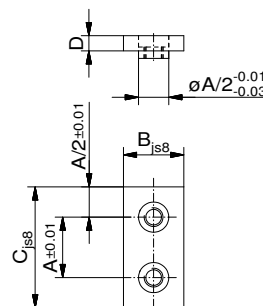
Nr.	A	B	C	
324205-1	16	64	M4	39



## Connecting lug NewXS 16

One row

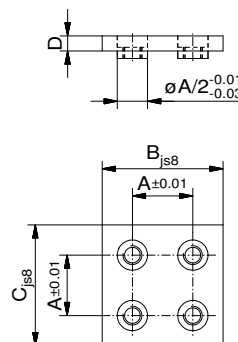
Nr.	A	B	C	D	
326731-1	16	16	32	4	5
326732-1	16	16	64	4	10



## Connecting lug NewXS 16

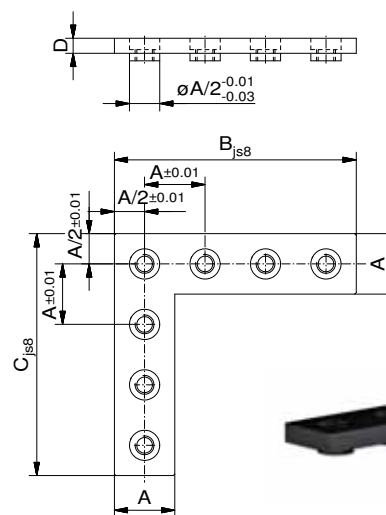
Two row

Nr.	A	B	C	D	
324203-1	16	32	32	4	10

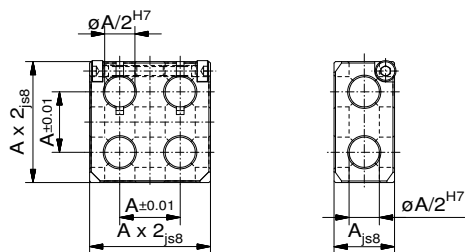


## Angle connecting lug NewXS 16

Nr.	A	B	C	D	
326796-1	16	48	48	4	13
326795-1	16	64	64	4	18



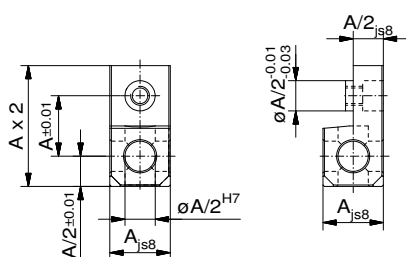
**NewXS** components can be anodized in different colours. Black (with suffix -1) is standard. Anodized natural is also available. Other colours on request.



## Clampholder NewXS 16

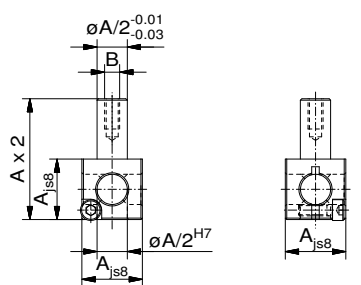
Two row

Nr.	A			
285042-1	16			80



## Basic bar NewXS 16

Nr.	A			
324209-1	16			11



## Clampholder NewXS 16

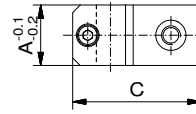
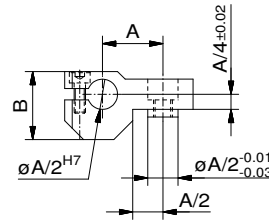
with stud

Nr.	A	B		
285043-1	16	M4		8



### Tailstock NewXS 16

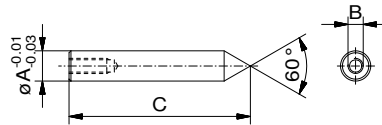
Nr.	A	B	C	
285044-1	16	18	34	14



### Center NewXS 16

fixed

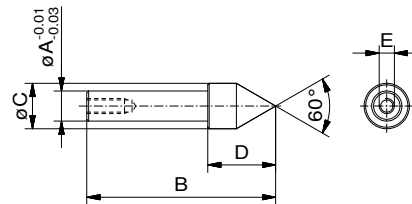
Nr.	A	B	C	
326748-1	8	M4	48	6



### Center NewXS 16

rotating

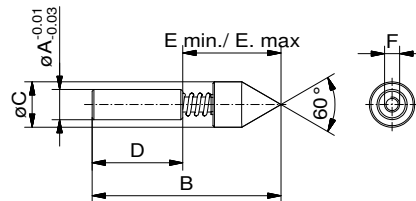
Nr.	A	B	C	D	E	
284583-1	8	50	12	18	M4	13



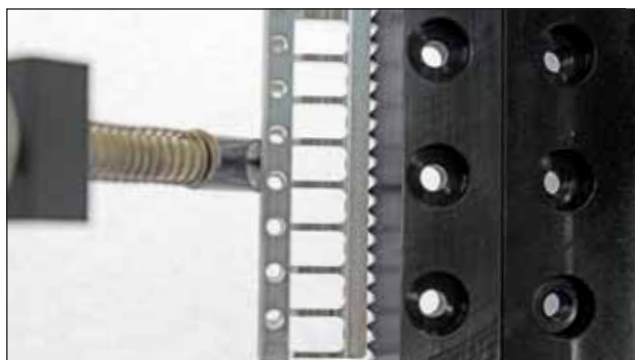
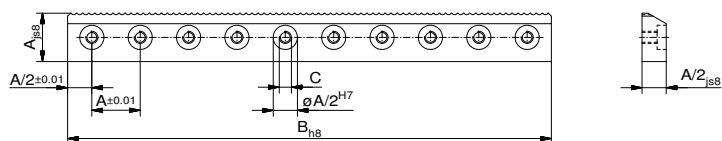
### Center NewXS 16

rotating, spring loaded

Nr.	A	B	C	D	E min.	E max.	F	
284584-1	8	50	12	24	21	26	M4	18



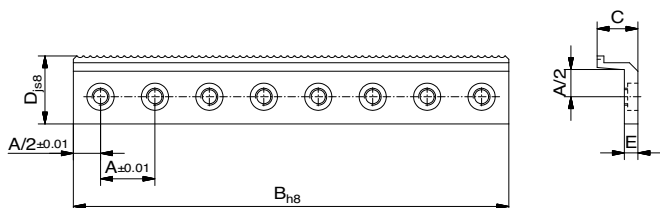
NewXS components can be anodized in different colours. Black (with suffix -1) is standard. Anodized natural is also available. Other colours on request.



### Serrated bar NewXS 16

One row

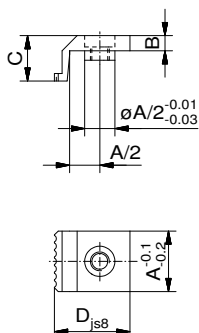
Nr.	A	B	C	g
326753-1	16	160	M 4	45
326754-1	16	192	M 4	54
326755-1	16	208	M 4	59
326756-1	16	224	M 4	63
326757-1	16	240	M 4	68



### Stop bar NewXS 16

One row, serrated

Nr.	A	B	C	D	E	g
326790-1	16	128	12	20	4	26
326791-1	16	144	12	20	4	29
326792-1	16	160	12	20	4	32
326793-1	16	224	12	20	4	45
326794-1	16	240	12	20	4	49



### Stop NewXS 16

serrated

Nr.	A	B	C	D	g
324206-1	16	4	12	20	6

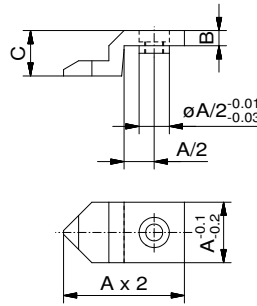




## Stop NewXS 16

pointed

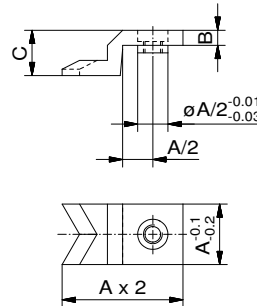
Nr.	A	B	C	g
326741-1	16	4	12	9



## Stop NewXS 16

Prismatic

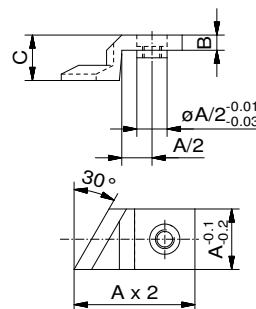
Nr.	A	B	C	g
326751-1	16	4	12	9



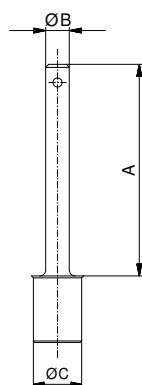
## Stop NewXS 16

angled

Nr.	A	B	C	Type	g
324204-1	12	4	12,0	left	8
324318-1	12	4	12,0	right	8



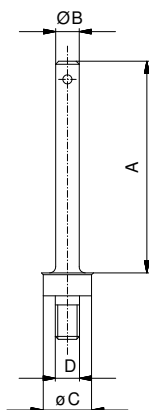
All NewXS stops have a pull-off thread M5



### Hold-down column

self-locking

Nr.	A	B	C	D	g
20338-1	35	3,9	8	46	3
22259-1	55	5,9	8	66	5

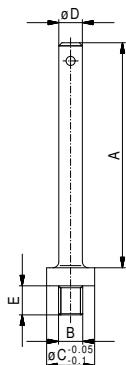


### Hold-down column

with thread

Nr.	A	B	C	D	E	g
20339-1	35	3,9	8	M4	46	3
22262-1	55	5,9	8	M4	66	5

for connection using crosspiece (p. 38)



### Hold-down column

with shortened thread

Nr.	A	B	C	D	E	g
327460-1	37,2	M4	8	3,9	4,8	3

for connection using crosspiece (p. 38)

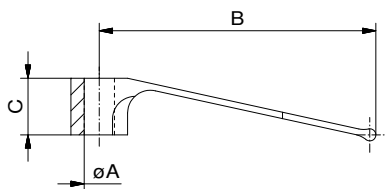


Hold down column with thread mounted using crosspiece nut

### Hold-down spring

self-locking on hold-down column

Nr.	A	B	C	
20244-1	4	36	7,5	1



### Hold-down spring

in black polymer,  
self-locking on hold-down column

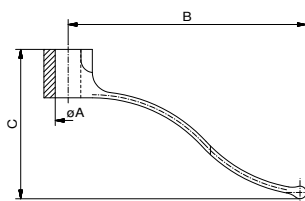
Nr.	A	B	C	
326971	4	36	7,5	1



### Hold-down spring

for low clamping

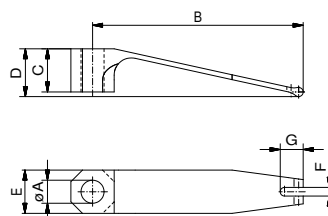
Nr.	A	B	C	
34634-1	4	36,5	23,5	2
34764-1	6	36,5	23,5	1



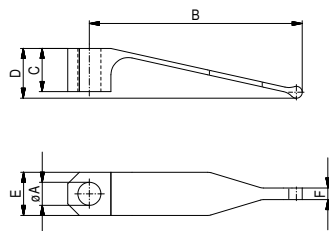
### Hold-down spring

forked

Nr.	A	B	C	D	E	F	G	
324211-1	$\varnothing 4$	36,6	7,5	8,3	7,5	1,5	4	1



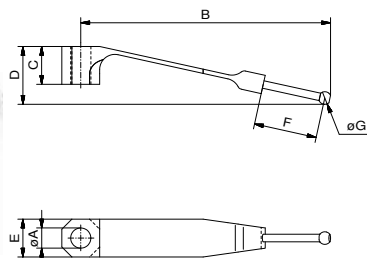
**NewXS** components can be anodized in different colours. Black (with suffix -1) is standard. Anodized natural is also available. Other colours on request.



### Hold-down spring

tapered

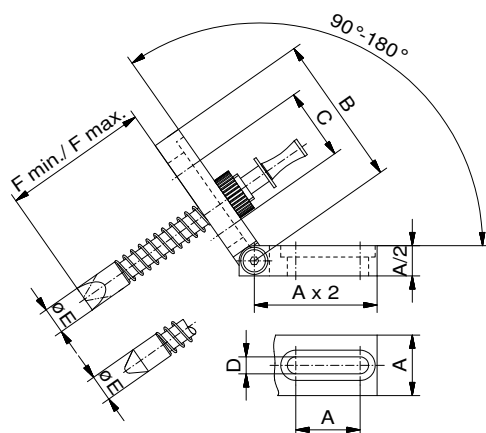
Nr.	A	B	C	D	E	F	
326970-1	ø4	37	7,5	8,7	7,5	2	1



### Hold-down spring

with ball point

Nr.	A	B	C	D	E	F	G	
284708-1	ø4	49,5	7,5	11,5	7,5	12,5	ø2,5	2



### Push rod NewXS 16

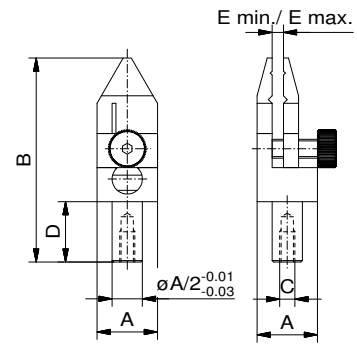
spring loaded

Nr.	A	B	C	D	E	F min.	F max.	
284477-1	16	40	19	4,5	ø7	25	50	23



## Parallel clamp NewXS 16 with exchangeable jaws

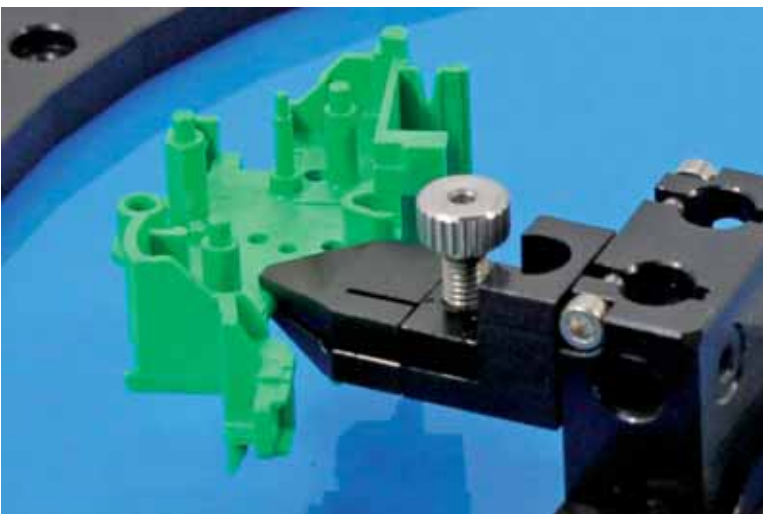
Nr.	A	B	C	D	E min.	E max.	g
284476-1	16	54	M4	16	0	8	20



Exchangeable jaws also available in other versions on request



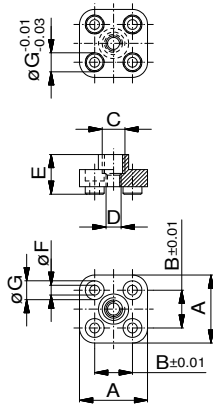
A push rod enables positioning from an angle



Parallel clamp in combination with clamp holder (p 12)



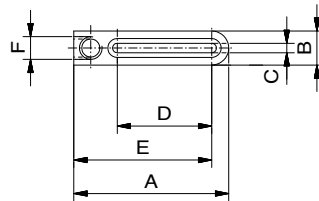
**NewXS** components can be anodized in different colours. Black (with suffix -1) is standard. Anodized natural is also available. Other colours on request.



## Foot XS 16

Adapter with thread

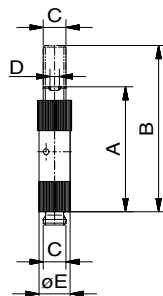
Nr.	A	B	C	D	E	F	G	g
335372-1	24	16	M6	M4	11	4,6	7	3



## Adjustable fish-tongue

for positioning independent of grid

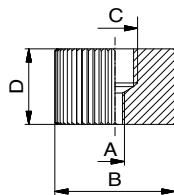
Nr.	A	B	C	D	E	F	g
32432-1	41	9	2,5	25	36,5	M6	10



## Telescopic unit

with thread

Nr.	A	B	C	D	E	g
85839-1	33	44	M6	M2,5	8	5
85444-1	63	99	M6	M2,5	8	10
94806-1	33	48	M6	M2,5	8	5



## Reducer female/female

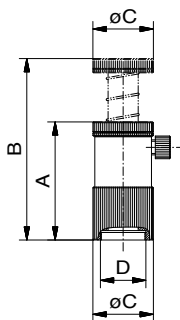
M6/M2,5

Nr.	A	B	C	D	g
327928-1	M2,5	12	M6	10	3

## Supporter

spring loaded

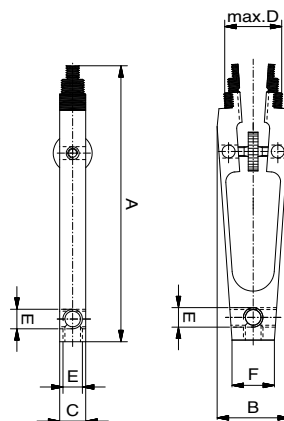
Nr.	A	B	C	D	
81585-1	31,2	48	16	M12X0,5	20



## Pincers

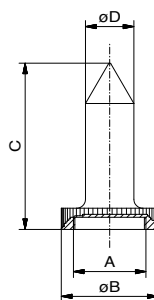
small and large

Nr.	A	B	C	D	E	F	
85423-1	46,8	16,9	8	9,3	M6	7	5
85443-1	85	22,2	8	17,5	M6	13	10



## Center

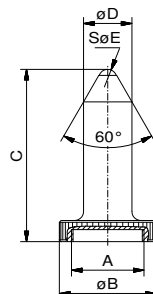
Nr.	A	B	C	D	
23638-1	M12 x 0,5	16	27,5	8	10
54031-1	M12 x 0,5	16	13,75	22	10



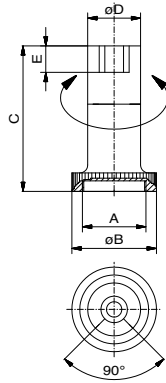
## Center

with ball

Nr.	A	B	C	D	E	
85676-1	M12 x 0,5	16	28,5	ø8	ø3	4



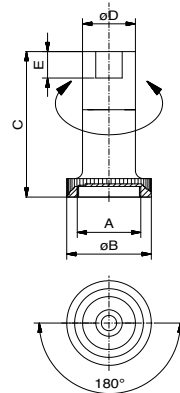
**NewXS** components can be anodized in different colours. Black (with suffix -1) is standard. Anodized natural is also available. Other colours on request.



## Stop and support

90°

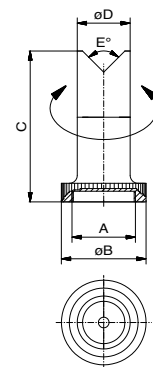
Nr.	A	B	C	D	E	g
93157-1	M12x0,5	16	27,5	10	5	10



## Stop and support

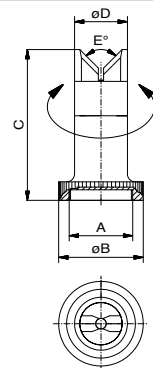
180°

Nr.	A	B	C	D	E	g
93158-1	M12x0,5	16	27,5	10	5	10



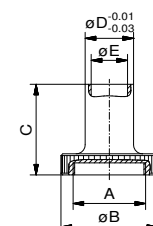
## V-piece

Nr.	A	B	C	D	E	g
93159-1	M12x0,5	16	27,5	10	90	10



## Knife-V

Nr.	A	B	C	D	E	g
93160-1	M12x0,5	16	27,5	10	90	10



## Magnetic Holder

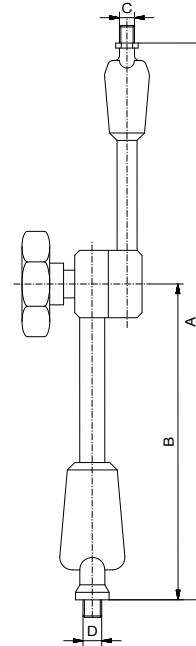
Nr.	A	B	C	D	E	g
95177-1	M12x0,5	$\phi 16$	15	$\phi 10$	$\phi 6$	60
95176-1	M12x0,5	$\phi 16$	22,5	$\phi 10$	$\phi 6$	100



## Swivel arm

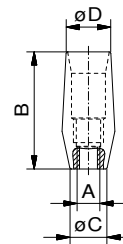
with joint

Nr.	A	B	C	D	max. load	
85411	130	70	M6	M6	30 N	135



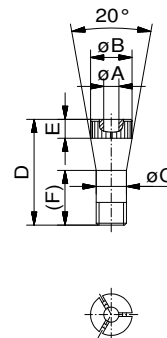
## Collet chuck XS 16

Nr.	A	B	C	D	
32440-1	M6	31	9,8	11,8	10

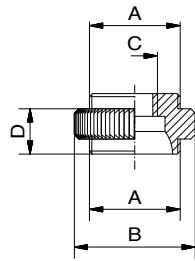


## Collet XS 16

Nr.	A	B	C	D	E	F	
32453-1	1,0	11	8	28	5	14,5	3
32463-1	1,5	11	8	28	5	14,5	3
32464-1	2,0	11	8	28	5	14,5	3
32465-1	2,5	11	8	28	5	14,5	3
32466-1	3,0	11	8	28	5	14,5	3
32467-1	3,5	11	8	28	5	14,5	3
32468-1	4,0	11	8	28	5	14,5	3
32469-1	4,5	11	8	28	5	14,5	3
32470-1	5,0	11	8	28	5	14,5	3
32471-1	5,5	11	8	28	5	14,5	3
32472-1	6,0	11	8	28	5	14,5	3

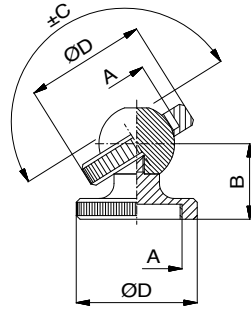


**NewXS** components can be anodized in different colours. Black (with suffix -1) is standard. Anodized natural is also available. Other colours on request.



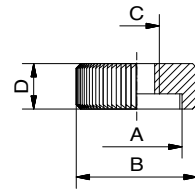
### Adapter for Ball joint

Nr.	A	B	C	D	
32524-1	M12x0,5	16	M6	6	2



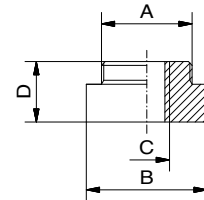
### Ball joint

Nr.	A	B	C	D	
81588-1	M12x0,5	10	55°	16	4



### Reducer

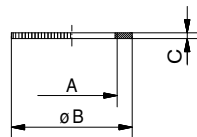
Nr.	A	B	C	D	
32525-1	M12x0,5	16	M6	6	2



### Reducer

with collar, also for swivel arm

Nr.	A	B	C	D	
32526-1	M12x0,5	16	M6	8	3



### Clamping ring

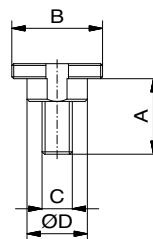
for keyless chuck

Nr.	A	B	C	
53928-1	M12x0,5	16	1,5	2

## Fixing disc

with stud

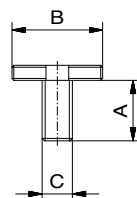
Nr.	A	B	C	D	
81587-1	10	M12x0,5	M4	8	2



## Fixing disc

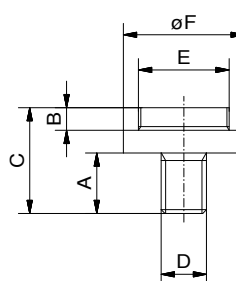
without stud

Nr.	A	B	C	
81589-1	8	M12x0,5	M4	2



## Adapter disc

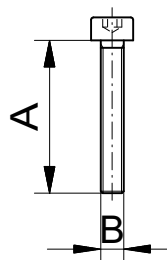
Nr.	A	B	C	D	E	F	
55875-1	8	3	14	M6	M12x0,5	16	3



## Hex socket head screw

DIN 7984

Nr.	A	B	DIN	WAF	
17255-S1	8	M4	7984	2,5	1
11546-S1	10	M4	7984	2,5	1,5
16141-S1	12	M4	7984	2,5	1,5
16359-S1	16	M4	7984	2,5	1,5

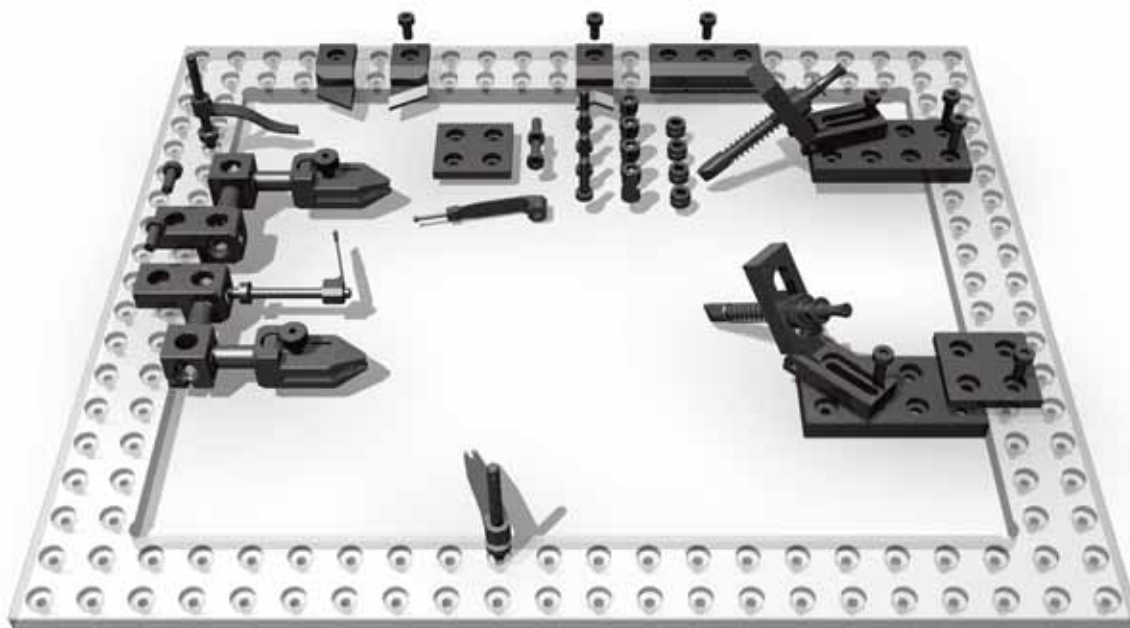


## Tool

Nr.	WAF	
17374	2,5	240




**NewXS** components can be anodized in different colours. Black (with suffix -1) is standard. Anodized natural is also available. Other colours on request.



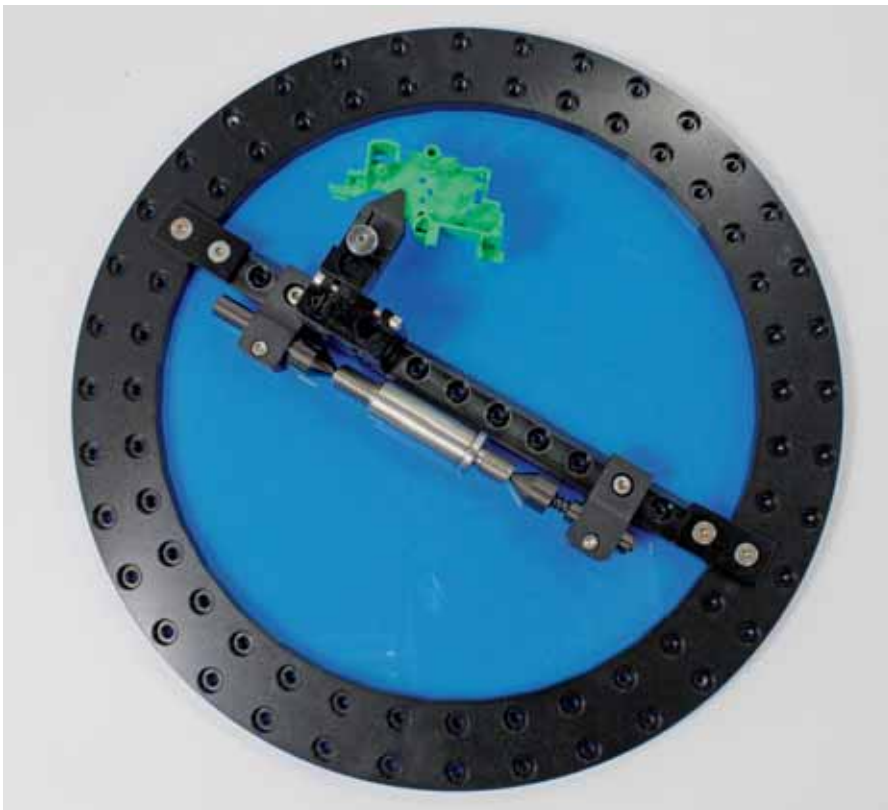
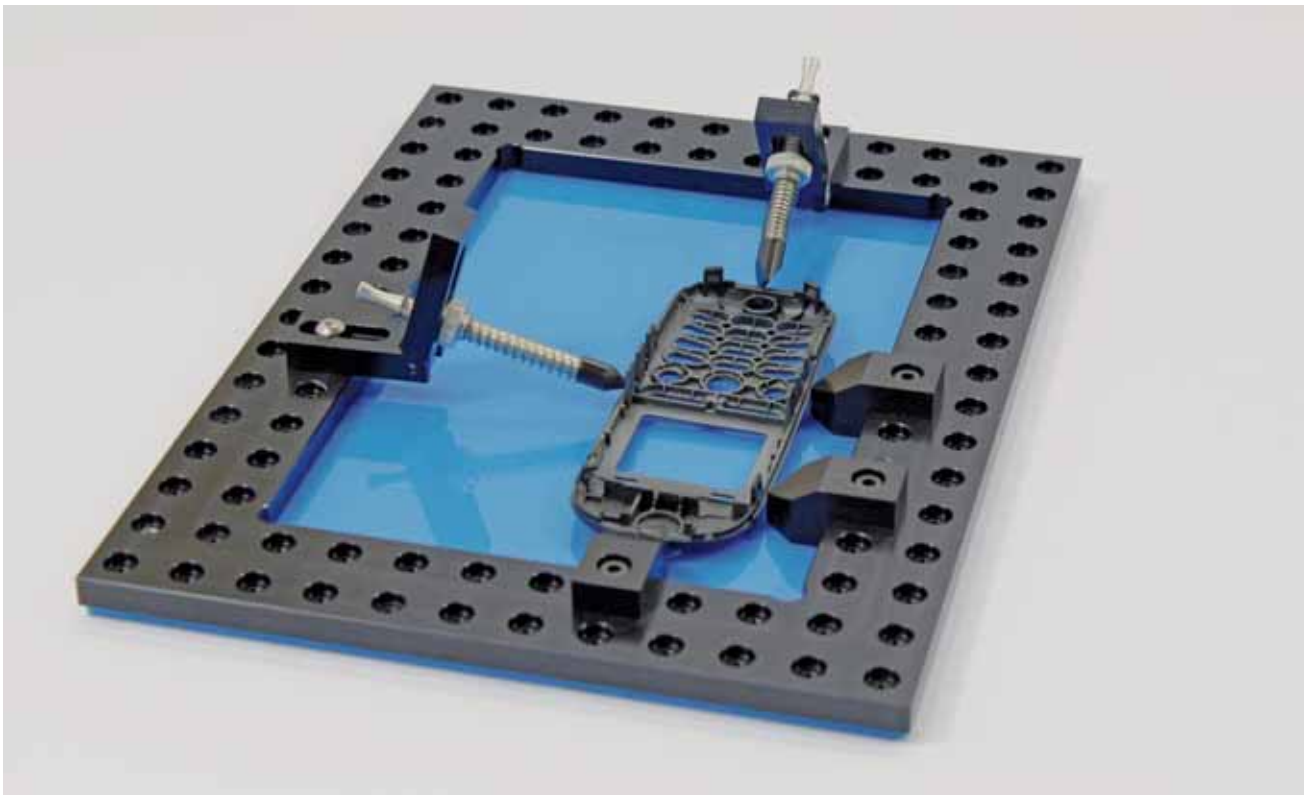
## #284421-1 Basic Kit Set up components

NewXS 16, (42-pcs), 2,7 kg

 The grid frame is not included in the set. Frames and bars suitable for your specific application are shown from page 8

Nr.	pcs	Name
324205-1	2	Adapter plate B=32mm L=64mm
324203-1	2	Connecting lug B=32mm
324204-1	1	Stop angled left
324318-1	1	Stop angled right
324209-1	2	Basic bar XS 16
284476-1	2	Parallel clamp XS 16
284477-1	2	Push rod
324208-1	2	Clamp holder B=16mm L=32mm
324206-1	3	Stop serrated B=16mm
327460-1	3	Hold-down column with thread
34634-1	1	Hold-down spring for low clamping
20244-1	2	Hold-down spring
284708-1	1	Hold-down spring with ball end
324211-1	1	Hold-down spring with forked end
324216-1	4	Positioning sleeve D=8mm
17255-S1	4	Cylinder head screw M4X8 DIN 7984
11546-S1	4	Cylinder head screw M4x10 DIN 7984
16141-S1	4	Cylinder head screw M4X12 DIN 7984
16359-S1	4	Cylinder head screw M4x16 DIN 912
52891-1	4	Crosspiece Ø4,3/16 AF16
12417	1	Storage case





Various applications for filigree parts



**i** NewXS components can be anodized in different colours. Black (with suffix -1) is standard. Anodized natural is also available. Other colours on request.

## Components

# ALUFIX 16 CLASSIC

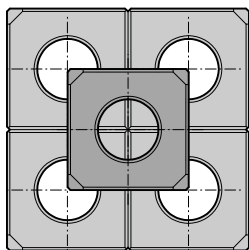
compatible with NewXS 16

Alufix Classic is the worldwide renowned and proven modular clamping and fixturing system for almost all applications in dimensional measuring technology.

Due to the high accuracy and quantity of intelligent elements Alufix sets are also in use as assembly and positioning systems. Right across all business areas ranging from automotive industry through aerospace to biomedical sciences people trust and use Witte Alufix Classic. If you have different materials, your parts vary in size, mass or stability, or you are measuring with tactile or optical equipment, Alufix Classic is the answer!

Due to the variety of components and of course the long experience of Witte Alufix Classic offers a solution for almost every task. Alufix Classic is not only an investment for current requirements but especially for the future, as all elements, according to the real idea of a modular system, are reusable and compatible with other Witte systems and elements.

## Profiles in original size



**AF 16 full,**  
**16x16,**  
**32x32,**  
**Hole diameter 8**

Material:	EN AW 7075 (high tensile aluminium)
Tensile strength:	Min. 480 N/mm <sup>2</sup>
Hardness:	Min. 130 HB
Yield strength:	Min. 390 N/mm <sup>2</sup>
E Module:	72.000 N/m <sup>2</sup>



### Base plates

serve as a base for building small to medium size fixtures. They can be connected on all 6 sides using quick or screw connection technology and are extremely flexible for all kinds of applications.



### Bars

are suitable for building small to medium size fixtures as a link between base and workpiece contact point. They can be connected on all 6 sides using quick or screw connection technology and are extremely flexible for all kinds of applications.

### Struts

serve to increase rigidity in frame type fixtures and for supporting columns. Depending on requirements they are connected at the ends to bars, grid or base plates using quick or screw connectors. The specially designed strut ends allow them to be mounted in two different angles by rotating 180°.



### Clamping elements

and clamps also in combination with workpiece contact points



### Adjustment elements

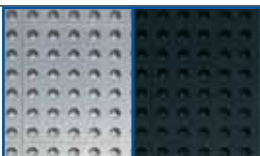
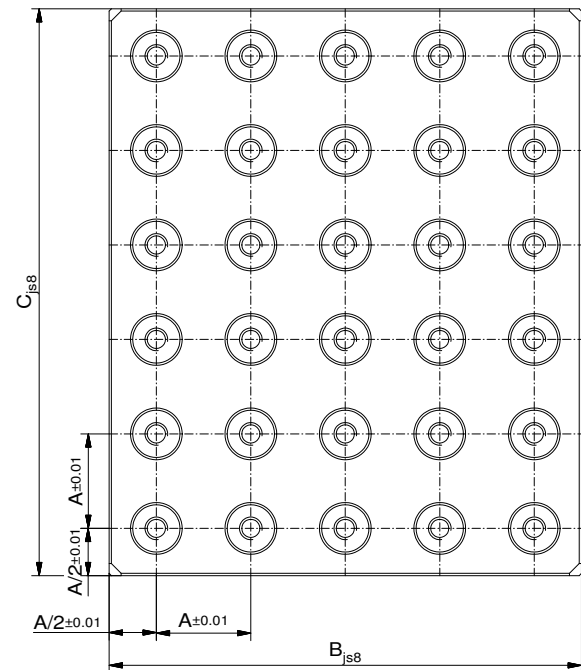
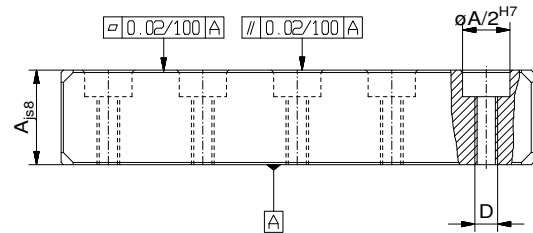
enable contact points to be accurately aligned with a workpiece independent of the system grid.



## Grid Base Plate ALUFIX 16

Grid (A) 16, hole diameter 8mm

Nr.	A	B	C	D	
20640-1	16	128	256	M4	1.416
20641-1	16	160	320	M4	2.221
20642-1	16	192	256	M4	2.123
20643-1	16	192	384	M4	3.185
20644-1	16	256	320	M4	3.539
20645-1	16	256	384	M4	4.247
20646-1	16	320	320	M4	4.424
20647-1	16	320	640	M4	8.847
20648-1	16	384	384	M4	6.370
20649-1	16	384	512	M4	8.493



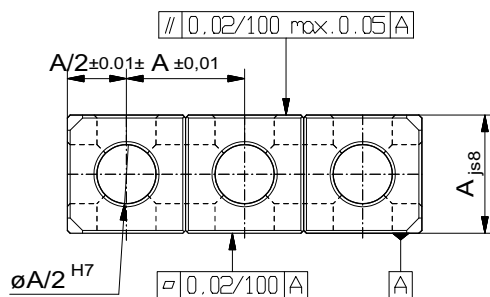
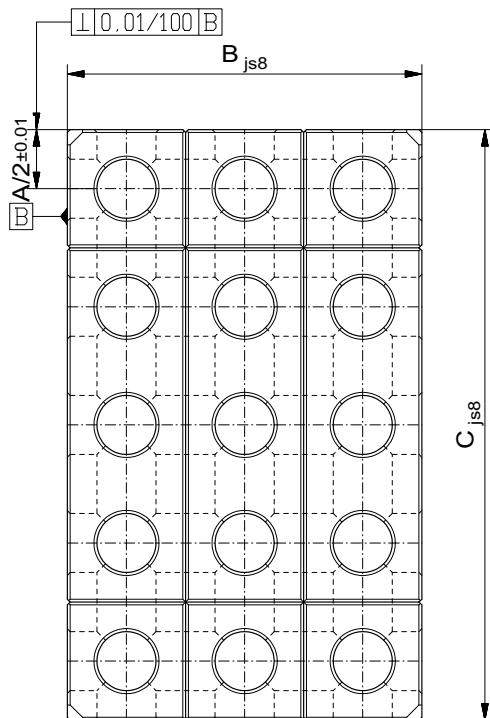
**NewXS** Base plates can be anodized in different colours. Black (with suffix -1) is standard. Anodized natural is also available. Other colours on request.



## Base plate ALUFIX 16

Grid (A) 16, hole diameter 8mm

Nr.	A	B	C	g
22093-1	16	32	32	27
22094-1	16	32	48	40
22095-1	16	32	64	53
22096-1	16	32	80	100
22932-1	16	32	96	80
22931-1	16	32	112	93
20652-1	16	32	160	131
20653-1	16	32	320	300



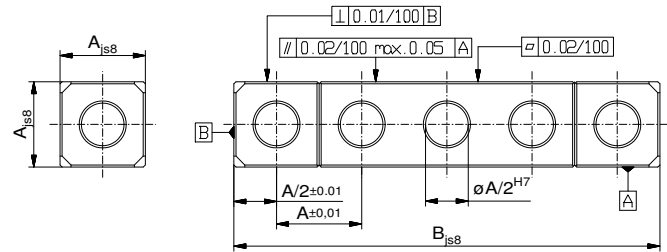
22930-1	16	64	96	160
21566-1	16	64	112	187
22929-1	16	64	128	214
21567-1	16	80	112	234
22928-1	16	80	128	267
21568-1	16	80	144	305
22926-1	16	80	160	335
21569-1	16	96	96	242
21570-1	16	96	112	282
21571-1	16	96	128	325
21572-1	16	96	144	375
21573-1	16	96	160	240
22924-1	16	96	176	447
22907-1	16	96	192	482
21574-1	16	112	240	703
21575-1	16	128	128	431
21576-1	16	128	144	475
21577-1	16	128	256	862
21579-1	16	160	192	804
21578-1	16	160	320	1.400
21580-1	16	192	256	1.298
21581-1	16	192	320	1.611
20112-1	16	240	240	1.510
22097-1	16	320	320	1.350
28076-1	16	384	384	3.812



## Full Bar ALUFIX 16

One row bar 16x16, Grid (A)16, hole diameter 8mm

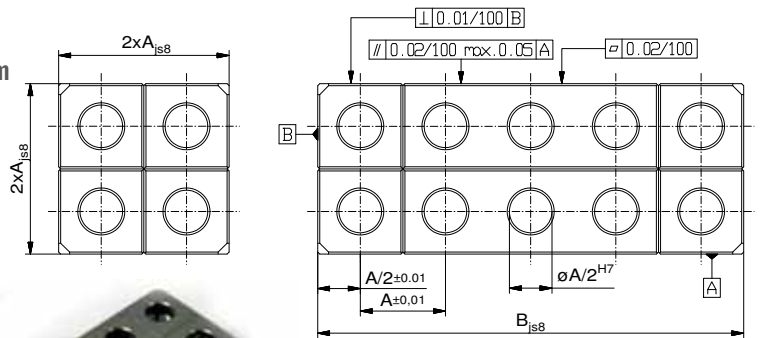
Nr.	B	
21582-1	16	7
21583-1	32	14
21584-1	48	21
21585-1	64	27
21586-1	80	33
20654-1	96	39
20801-1	128	53
20799-1	160	66
21587-1	320	140



## Full Bar ALUFIX 16

Two row bar 32x32, Grid (A)16, hole diameter 8mm

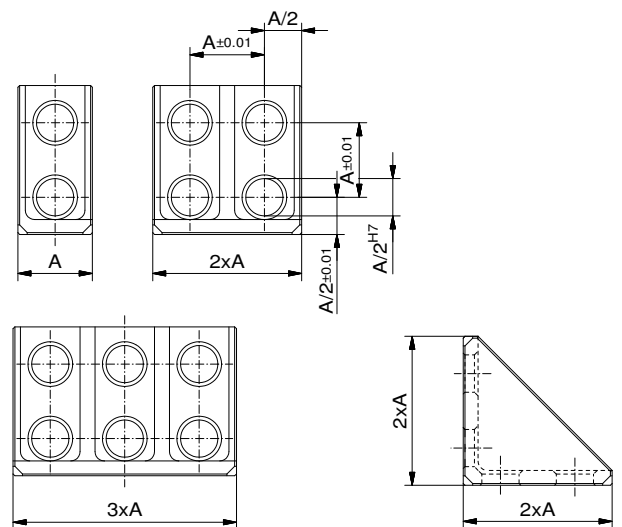
Nr.	B	
21588-1	32	53
21589-1	48	79
21590-1	64	108
21591-1	80	131
23892-1	96	160
20812-1	112	200
20848-1	128	230
20849-1	160	268
21592-1	320	537



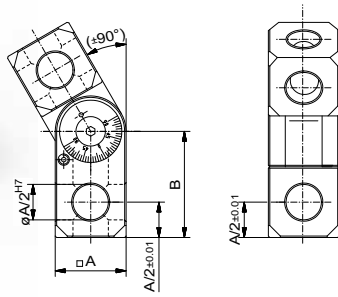
## Angle bracket

Alufix Classic, A=16

Nr.	A	
25101-1	1x	10
25102-1	2x	20
25103-1	3x	32

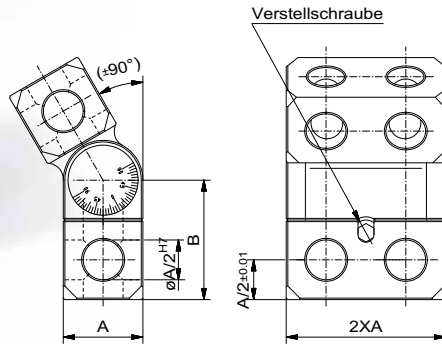


**NewXS** bars can be anodized in different colours. Black (with suffix -1) is standard. Anodized natural is also available. Other colours on request.



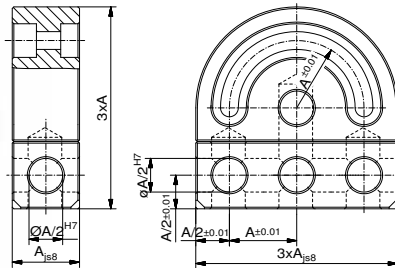
### Knuckle

Nr.	A (AF)	B	
81668-1	16	45	28



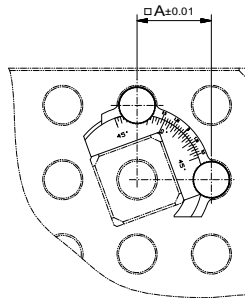
### Double knuckle

Nr.	A (AF)	B	
81811-1	16	45	65



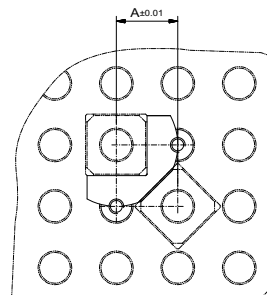
### Swivel

Nr.	A (AF)	
24578-1	16	56



### Heel block 45°- 90°

Nr.	A (AF)	
81607-1	16	4



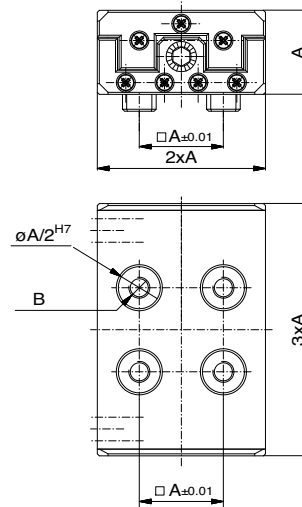
### Heel block 45°/ 90°

Nr.	A (AF)	
23667-1	16	3

## Roller slide

adjustment using a screw spindle

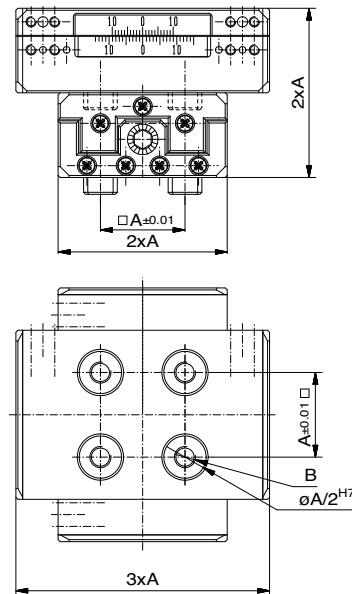
Nr.	A (AF)	B	max. load	shift	
82453-1	16	M4	20 kg	±9	89



## Cross roller slide

adjustment using a screw spindle

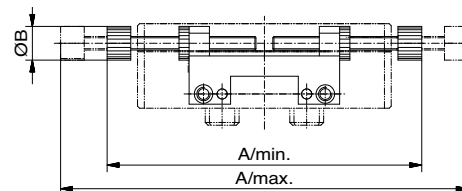
Nr.	A (AF)	B	max. load	shift	
82461-1	16	M4	20 kg	±9	178



## Slide stop

for roller slides

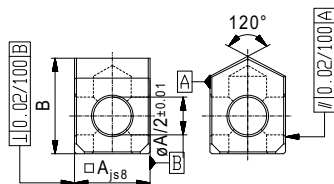
Nr.	A/min	A/max	B	
82411-1	59	77	6,4	98



**NewXS** components can be anodized in different colours. Black (with suffix -1) is standard. Anodized natural is also available. Other colours on request.



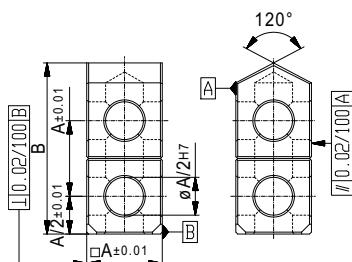
Arrange 2 delta blocks in a V to support round parts



### Delta block 120°

Form 1

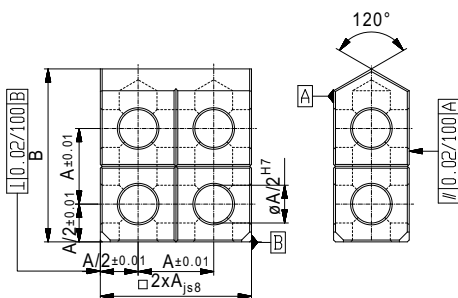
Nr.	A(AF)	B	
22240-1	16	20	8



### Delta block 120°

Form 2

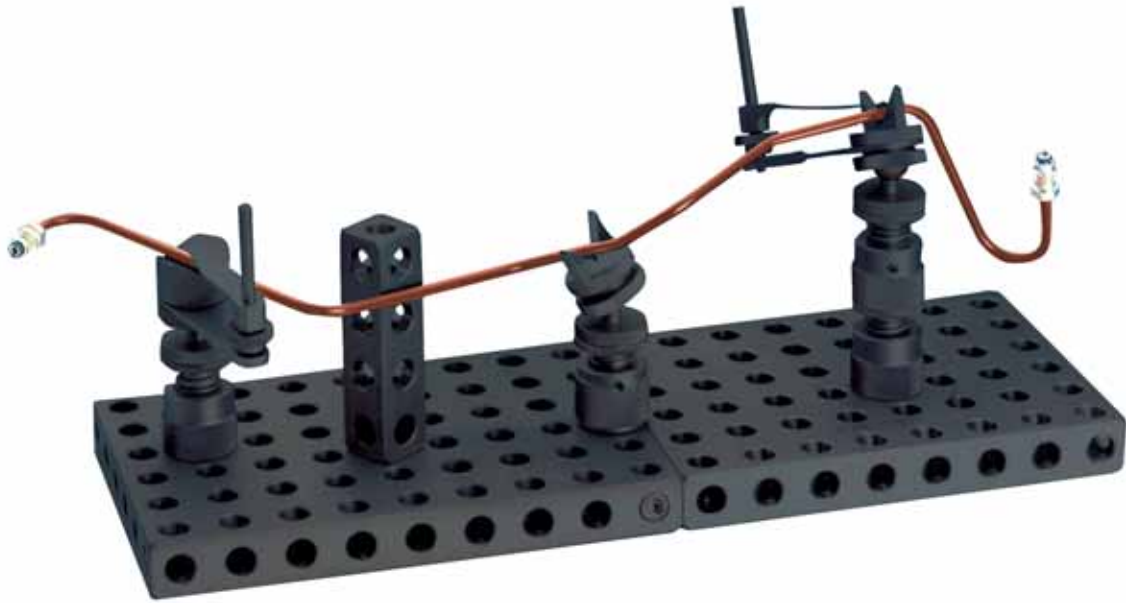
Nr.	A(AF)	B	
22252-1	16	36	15



### Delta block 120°

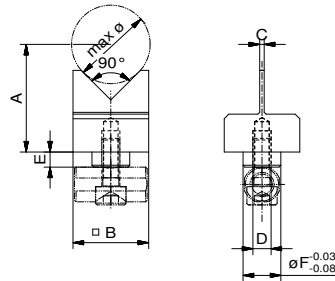
Form 3

Nr.	A(AF)	B	
22255-1	16	36	30



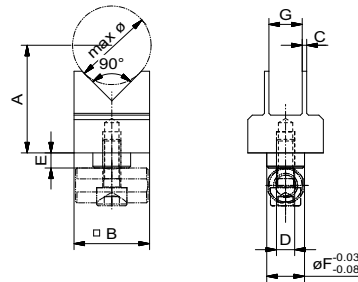
### V piece 90° single

Nr.	A	B(AF)	C	D	E	F	g
80923-1	24	16	1	M4	3	8	9



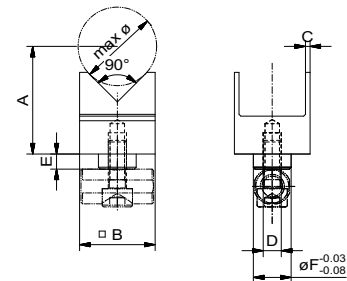
### V piece 90° double, V narrow

Nr.	A	B(AF)	C	D	E	F	G	g
80921-1	24	16	1	M4	3	8	7	10

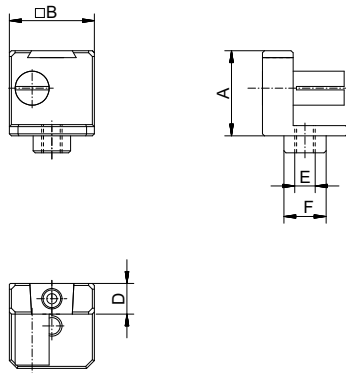


### V piece 90° double, V wide


Nr.	A	B(AF)	C	D	E	F	g
80922-1	24	16	1	M4	3	8	10

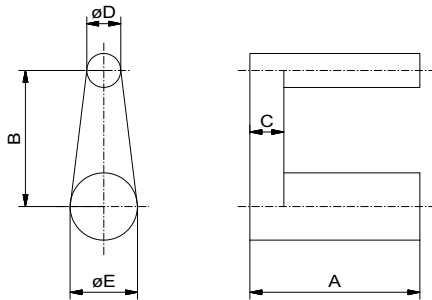


**i** NewXS components can be anodized in different colours. Black (with suffix -1) is standard. Anodized natural is also available. Other colours on request.



## Winder

Nr.	A	B(AF)	D	E	F	
80742-1	16	16	6	M4	8	11



## Deflector

Nr.	A	B	C	D	E	
22274-1	19	16	3	4	7,9	4



## Winder tape

in plastic, 12 mm wide

Nr.	length (m)
00041	5

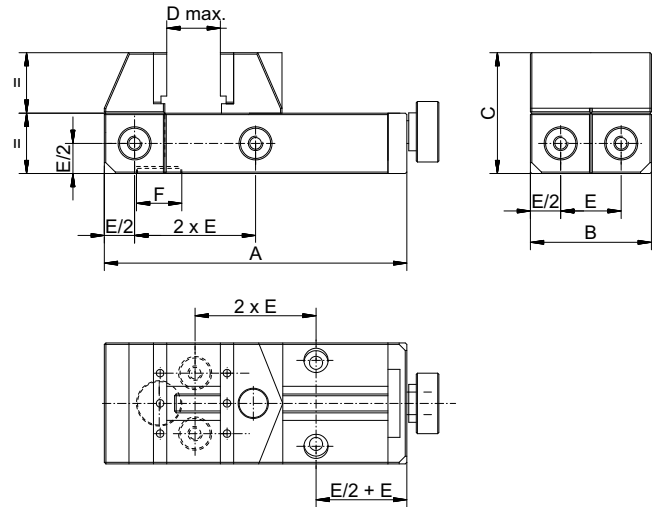
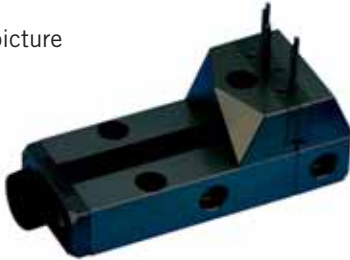
Round symmetrical parts quickly and easily positioned on V block for measuring and secured using winder, tape and deflector



## Vise ALUFIX 16

Nr	E (AF)	A	B	C	D	E	F	
81784-1	16	80	32	32	40	16	M12x0,5	310

Pins shown in picture not included



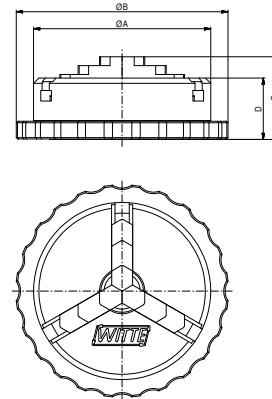
## Pin ALUFIX 16

for vise

Nr.	A	B	C	D	E	
24604-1						

## 3-Jaw Keyless Chuck ALUFIX 16

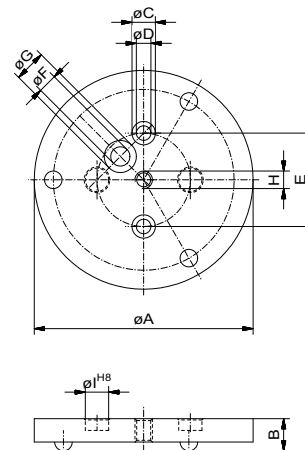
Nr.	A	B	C	D	
82220-1	50	60	23,3	17,3	95



## Centerplate ALUFIX 16

for keyless chuck

Nr	A	B	C	D	E	F	G	H	I	
82371-1	75	11	8	5	32	6,6	11	M6	8	100



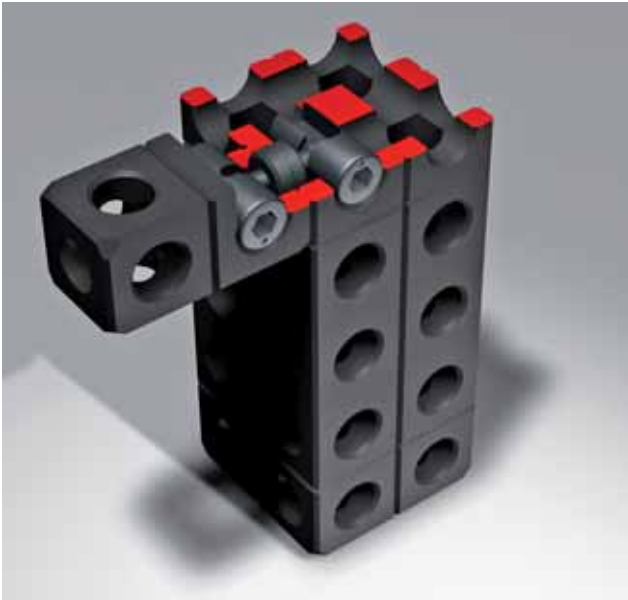
NewXS components can be anodized in different colours. Black (with suffix -1) is standard. Anodized natural is also available. Other colours on request.

For other versions of vises and keyless chucks please see our main catalogue, chapter "clamping elements"

# ALUFIX

## Connection Elements

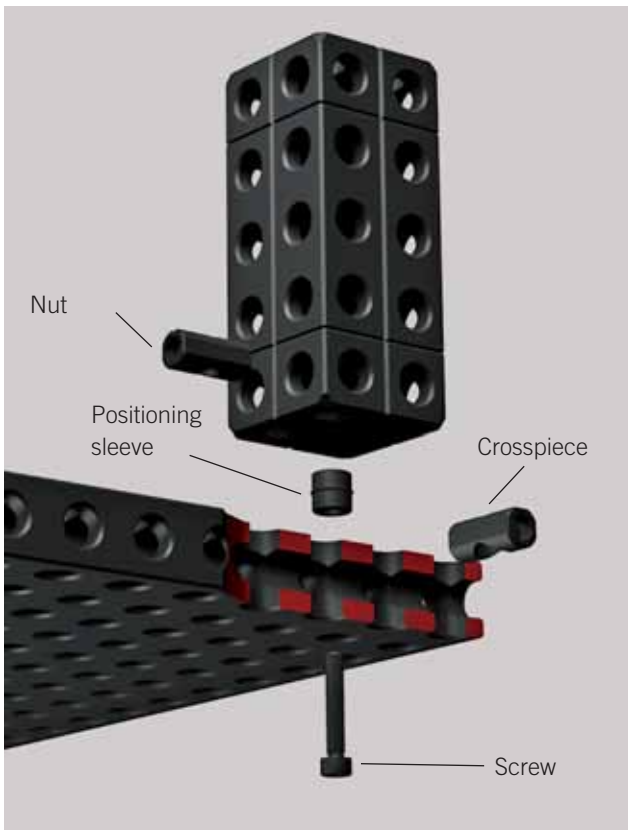
A variety of elements allows combination of Alufix components whenever two opposite holes, or a hole and a nub are to be connected. This works also between different system sizes using reducer sleeves.



### Quick connection

For fast, constantly changing fixtures we recommend using quick connection elements.

A twin bolt is positioned between Alufix elements to be connected. An excentric slot on the lock slides round and grips the head of a twin bolt resulting in a tight connection.



### Screw connection

For lasting tight connections the screw connection has proved to be the best.

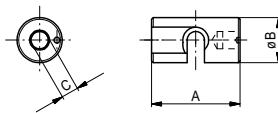




## Lock Alufix

standard lock for quick connection

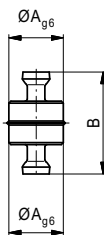
Nr.	System	A	B	C	
23250	AF 16	16	8	SW3	4



## Twin bolt

for quick connection

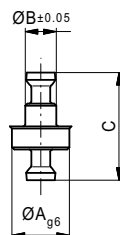
Nr.	System	A	B	
23247	AF 16	8	15	3



## Twin bolt

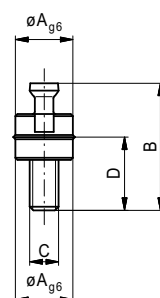
for bar 1D and base plate 2

Nr.	System	A	B	C	
23248	AF 16	8	4	15	2



## Combi bolt

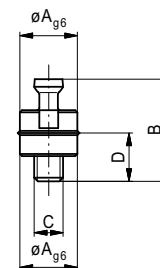
Nr.	System	A	B	C	D	
23249	AF 16	8	17,7	M4	10,2	3



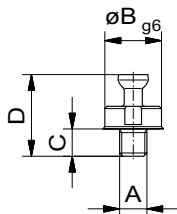
## Combi bolt

shortened

Nr.	System	A	B	C	D	
25742	AF 16	8	14,2	M4	6,7	1



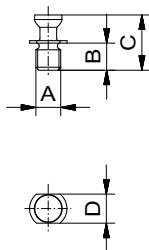
**NewXS** components can be anodized in different colours. Black (with suffix -1) is standard. Anodized natural is also available. Other colours on request.



### Combi bolt

for grid plate without fitted bore and keyless chuck

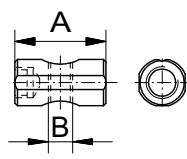
Nr.	System	A	B	C	D	
25746	AF16	M4	8	3,5	11	2



### Combi bolt

shortened, for elements with nubs

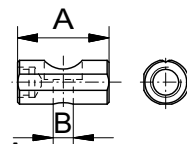
Nr.	System	A	B	C	D	
20341	AF 16	M4	4,5	8,9	SW5	1



### Crosspiece nut

for screw connection

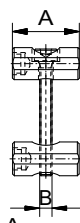
Nr.	System	A	B	
80620-1	16	16	M3	2
80621-1	<b>16</b>	<b>16</b>	<b>M4</b>	<b>2</b>
81277-1	16	16	M3	2



### Crosspiece

for screw connection

Nr.	System	A	B	
21596-1	16	16	3,3	2
21597-1	<b>16</b>	<b>16</b>	<b>4,3</b>	<b>2</b>



### Connecting set

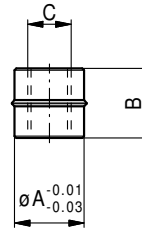
for screw connection

Nr.	System	A	B	
80697-1	16	16	M3	4
80698-1	<b>16</b>	<b>16</b>	<b>M4</b>	<b>14</b>

## Positioning sleeve

AF 16

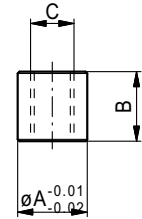
Nr.	A	B	C	g
324216-1	8	6	M5	1



## Positioning sleeve

plain

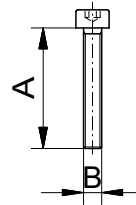
Nr.	A	B	C	g
21599-1	8	8	M5	1



## Hex socket head screw

DIN 912

Nr.	A	B	DIN	WAF	g
17255-S1	8	M4	7984	2,5	1
11546-S1	10	M4	7984	2,5	1
16141-S1	12	M4	7984	2,5	1,5
16359-S1	16	M4	7984	3	1,5



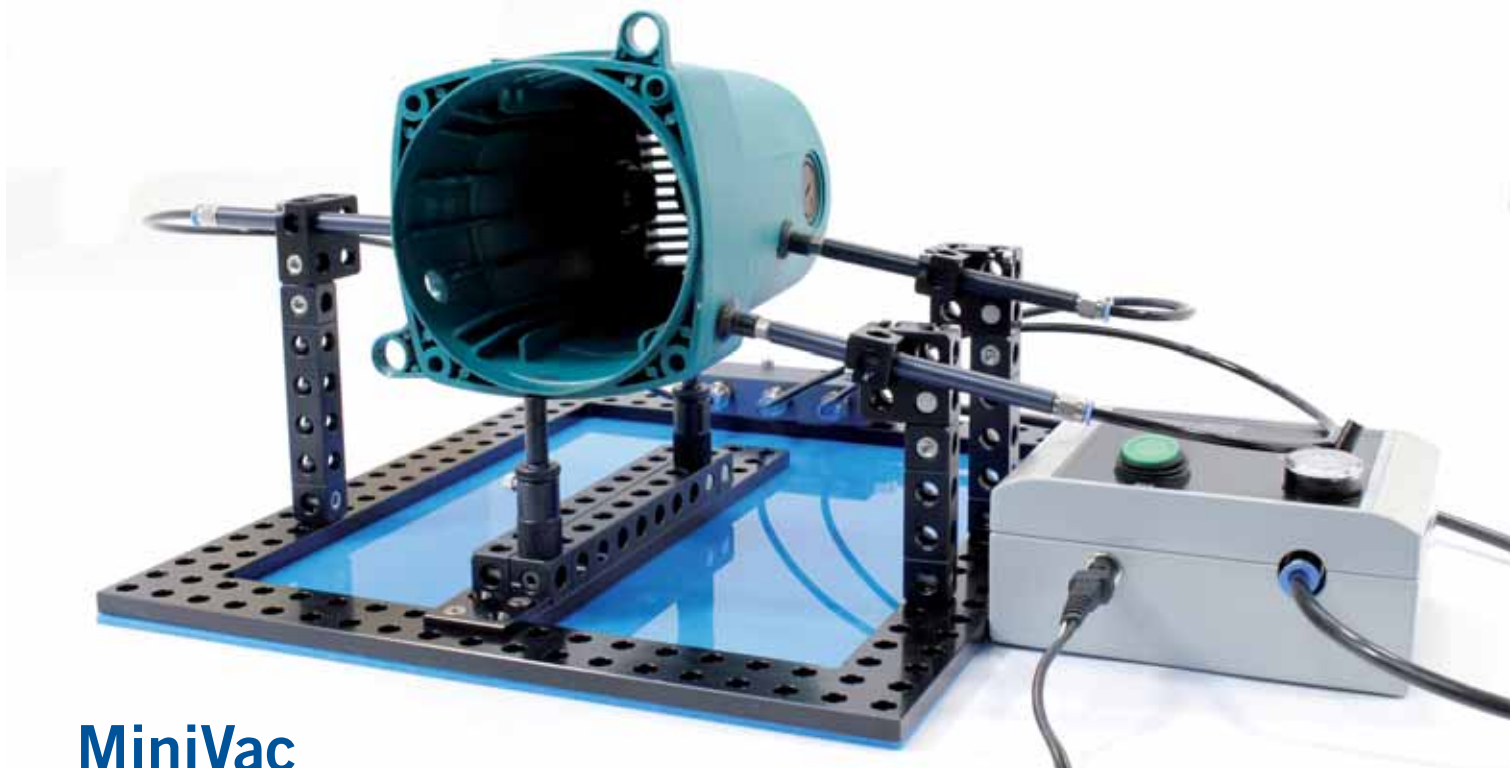
Standard thread sizes are printed in **bold print**

## Tool

Nr.	WAF	g
17375	2	210
17374	2,5	220
17636	3	230



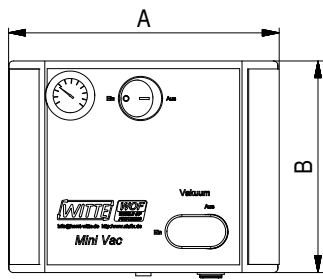
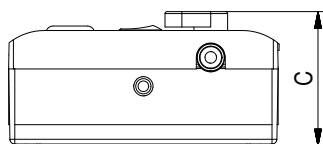
**NewXS** components can be anodized in different colours. Black (with suffix -1) is standard. Anodized natural is also available. Other colours on request.



## MiniVac

### Vacuum clamping system

The MiniVac vacuum pump supplies air intake for up to 6 suckers using a minimum of space. An integrated tank with pressure difference switch prevents an abrupt drop in vacuum (and in worst case release of workpiece) and avoids pump running continuously.



### MiniVac pump

3500ccm/h

Nr.	A	B	C	g
284752	140	110	70	480

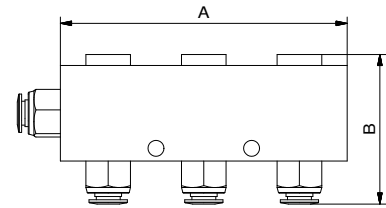
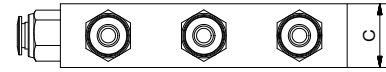
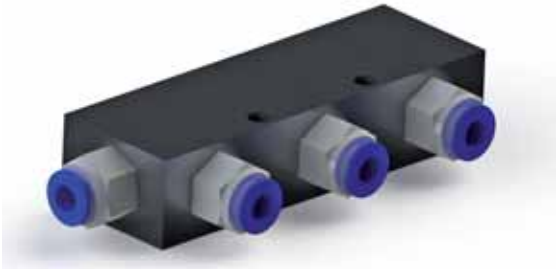


- Operation via 220V power pack, integrated on/off switch with light display, vacuum switch and manometer. Double function membrane pump, max. 90° volume, 3500ccm/h. tank approx. 150ccm.

## MiniVac Distributor

with 6 connections inc. 1m connection hose to vacuum pump

Nr.	A	B	C	
284753	90	47	20	180



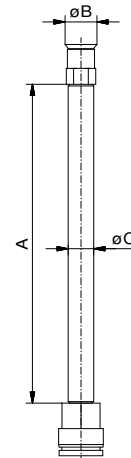
## MiniVac Sucker

comprising: tube, sucker, connector

Nr.	A	B	C	
284391	100	10	8	20



The suckers have a standard diameter of 10mm and are made of NBR. Other materials, dimensions, forms (i.e. oval) on request.



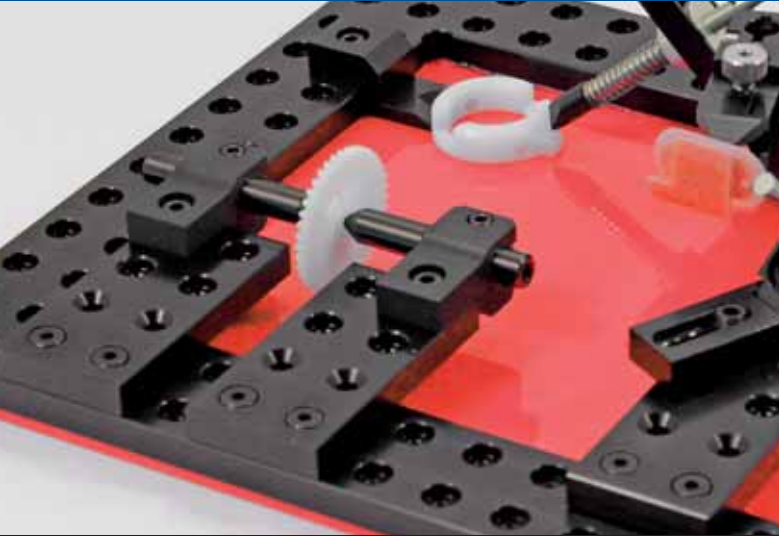
## MiniVac – Suction hose

In PU, black

Nr.	D	L	
00958	6x1	1m	17



NewXS components can be anodized in different colours. Black (with suffix -1) is standard. Anodized natural is also available. Other colours on request.

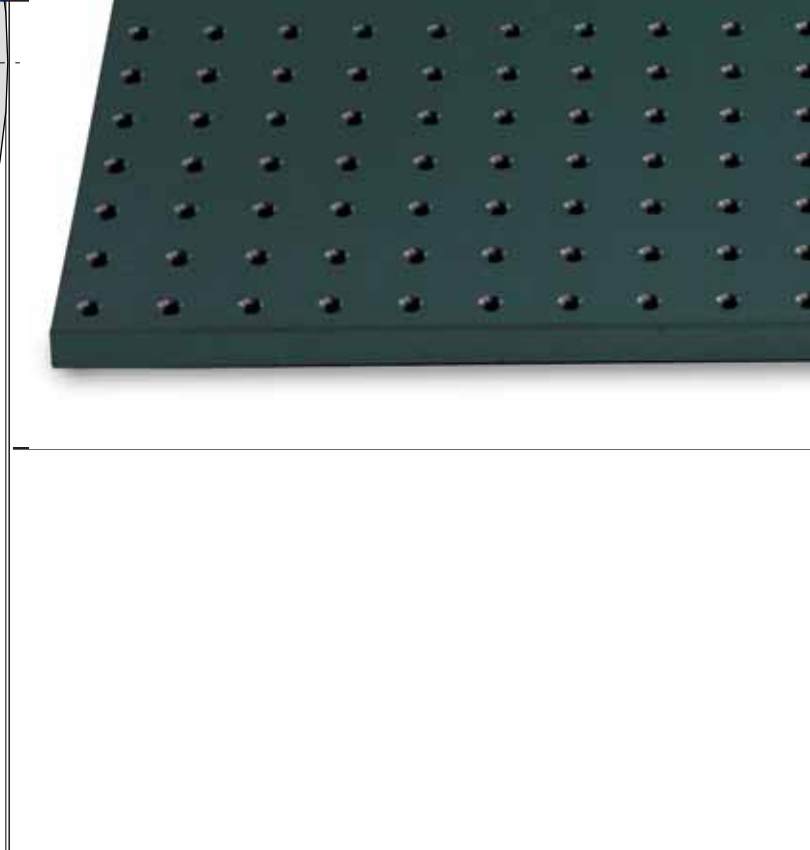
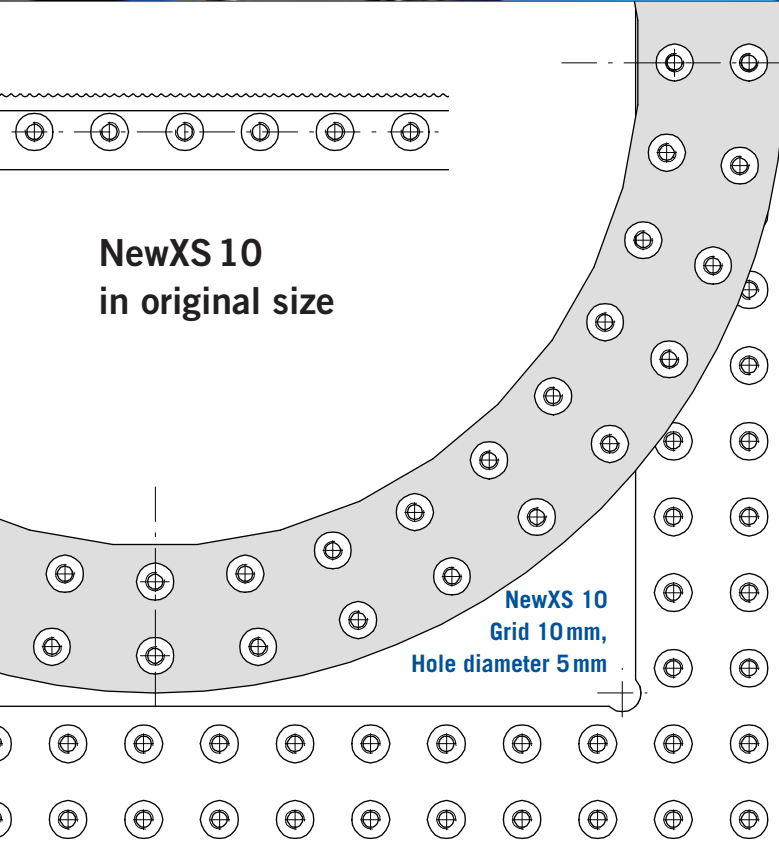
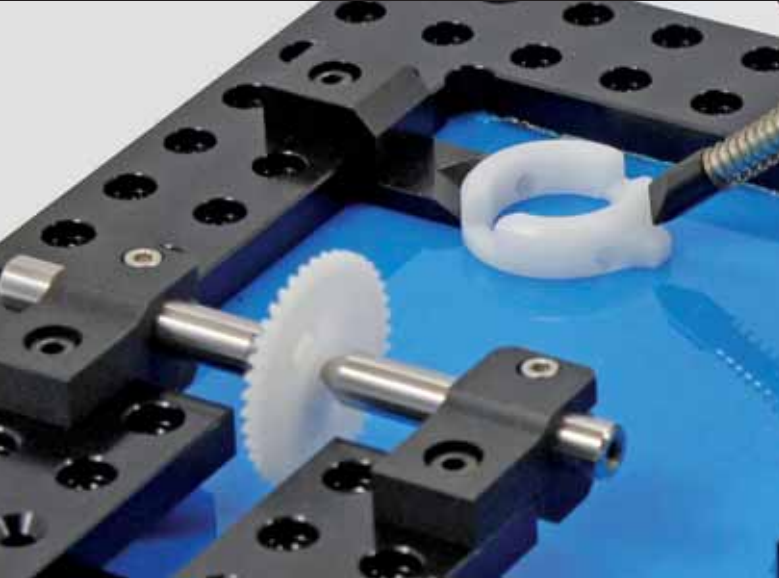


Available on request

## NewXS 10

Modular fixturing system for optical measuring and checking instruments

Components in system size New XS10  
are available on request



## Index

### A

Adapter 24  
Adapter disc 25  
Adapter plate 11  
Adjustable fish-tongue 20  
ALUFIX 16 28  
Angle bracket 31  
Angle connecting lug 11

### B

Ball joint 24  
Bar 10  
Base plate 30  
Basic bar 12  
Basic Kit 26

### C

Center 13, 21  
Centerplate 37  
Clampholder 12  
Clamping ring 24  
Collet 23  
Collet chuck 23  
Combi bolt 39, 40  
Components 5, 7, 26, 28  
Connecting lug 11  
Connecting set 40  
Connection Elements 38  
Contents 1  
Cross roller slide 33  
Crosspiece 40  
Crosspiece nut 40

### D

Deflector 36  
Delta block 34  
Distributor 43  
Double knuckle 32

### F

Fixing disc 25  
Foot 20  
Full Bar 31

### G

Grid Base Plate 29  
Grid frame 8  
Grid ring 8

### H

Heel block 32  
Hex socket head screw 25, 41  
Hold-down column 16  
Hold-down spring 17, 18

### I

Introduction 3, 4, 5, 6

### K

Keyless Chuck 37  
Knife-V 22  
Knuckle 32

### L

Lock 39

### M

Magnetic Holder 22  
MiniVac 42, 43

### N

NewXS 10 44

### O

Original size 6, 28, 44

### P

Parallel clamp 19  
Pin 37  
Pincers 21  
Positioning sleeve 41  
Pump 42  
Push rod 18

### Q

Quick connection 38

### R

Reducer 20, 24  
Roller slide 33

### S

Screw 4, 38  
Screw connection 38  
Serrated bar 14  
Slide stop 33  
Stop 14, 15  
Stop and support 22  
Stop with clamp 9  
Sucker 43  
Suction hose 43  
Supporter 21  
Swivel 32  
Swivel arm 23

### T

Tailstock 13  
Telescopic unit 20  
Tool 25, 41  
Twin bolt 39

### V

V-piece 22, 35  
Vise 37

### W

Winder 36  
Winder tape 36



**Germany**  
**Horst Witte Gerätebau**  
 Barskamp KG  
 Horndorfer Weg 26-28  
 D-21354 Bleckede  
 Germany  
 Tel.: +49 (0) 58 54/89-0  
 Fax: +49 (0) 58 54/89-40  
 E-mail:  
 info@horst-witte.de  
 www.horst-witte.de

**Asia**  
**Witte Far East Pte Ltd**  
 20 Boon Lay Way  
 # 01 - 170  
 Singapore 609967  
 Singapore  
 Tel.: +65-6248 5961  
 Fax: +65-6898 4542  
 E-mail: info@witteasia.com  
 rfq@witteasia.com  
 www.witteasia.com

**USA & Canada**  
**Witte LP**  
 2220 Northmont Pkwy, Suite 250  
 Duluth, Georgia 30096  
 USA  
 Phone: +1 (770) 982 99 32  
 Fax: +1 (770) 982 99 28  
 E-mail:  
 info@witteamerica.com  
 rfq@witteamerica.com  
 www.witteamerica.com

**Mexico**  
**Horst Witte de Mexico**  
 S.A. de C.V.  
 Linco SC  
 2 Sur 1706, Col. El Carmen  
 Puebla, 72000  
 Mexico  
 Phone:  
 +52 222893-8210  
 E-mail: esanchez@linco.com.mx  
 www.wittemexico.de

**Witte –**  
 specialized in

**Modular  
 fixing systems**

**Subcontracting**

**Vacuum-  
 clamping systems**

